

Ezi-SERVO[®] Plus-R

Closed Loop Stepping System

**Ezi-SERVO[®] Plus-R
MINI**

Closed Loop Stepping System

Ezi-SERVO[®] ALL

Closed Loop Stepping System

- User Manual -

Communication Function (Ver.4)

※ Before operation ※

- Thank you for your purchasing Ezi-SERVO.
- Ezi-SERVO is an all-in-one Unit, for high-speed and high-precision drive of a stepping motor, Ezi-SERVO is an unique drive that adopts a new control scheme owing to an on-board high-performance 32 bit digital signal processor.
- This manual describes handing, maintenance, repair, diagnosis and troubleshooting of Ezi-SERVO.
- Before operating Ezi-SERVO, thoroughly read this manual.
- After reading the manual, keep the manual near the Ezi-SERVO so that any user can read the manual whenever needed.

- Table of Contents -

1.	Safety Pre-caution	5
1.1	General Precaution	5
1.2	Put the safety First.....	5
1.3	Check the Product	5
1.4	Installation	5
1.5	Connect Cables	6
1.6	Operation.....	6
1.7	Check and Repair	6
2.	Communication Protocols.....	7
2.1	Communication Functions.....	7
2.1.1	Communication Specifications.....	7
2.1.2	RS-485 Communication Protocol	7
2.1.3	CRC Calculation Example.....	9
2.1.4	Response Frame Structure and Communication Error(V6)	12
2.2	Structure of Frame type	13
2.2.1	Frame type and Data Configuration(Ezi-SERVO Plus-R standard)	13
2.2.2	Parameter Lists	31
2.2.3	Bit setup of Output pin	32
2.2.4	Bit setup of Input pin	33
2.2.5	Bit setup of Status Flag	34
2.2.6	Position Table Item	35
2.3	Program Method	36
3.	Library for PC Program	37
3.1	Library Configuration	37
3.2	Communication Status Window.....	38

3.3	Drive Link Function.....	43
3.4	Parameter Control Function	59
3.5	Servo Control Function	65
3.6	Control I/O Function.....	69
3.7	Position Control Function.....	82
3.8	Drive Status Control Function	93
3.9	Running Control Function.....	99
3.10	Position Table Control Function	123
3.11	Other Control Function	132
4.	Protocol for PLC Program.....	138
4.1	Servo ON/OFF command protocol.....	138
4.2	Motion command protocol.....	139

1. Safety Pre-caution

1.1 General Precaution

- ◆ Contents of this manual are subject to change without prior notice for functional improvement, change of specifications or user's better understanding.
- ◆ When the manual is damaged or lost, please contact with FASTECH's agents or our company at the address on the last page of the manual.
- ◆ Our company is not responsible for a product breakdown due to user's dismantling for the product, and such a breakdown is not guaranteed by the warranty.

1.2 Put the safety First

- ◆ Before installation, operation and repairing the Ezi-SERVO thoroughly read the manual and fully understand the contents. Before operating Ezi-SERVO please understand the mechanical characteristics of the Ezi-SERVO and related safety information and precaution .
- ◆ This manual divides safely precautions into **Attention** and **Warning**.



Attention

If user does not properly handle the product, the user may seriously or slightly injured and damages may occur in the machine.



Warning

If user does not properly handle the product, a dangerous situation (such as an electric shock) may occur resulting in death or serious injuries.

- ◆ Although precaution is only a **Attention**, a serious result could be caused depending on the situation, Follow safely precautions.

1.3 Check the Product



Attention

Check the product is damaged or parts are missing. Otherwise the machine may get damaged or the user may get injured.

1.4 Installation



Attention



- Carefully move the Ezi-SERVO. Otherwise, the product may get damaged or user's foot may get injured by dropping the product..
- Use non-flammable materials such as metal in the place where the Ezi-SERVO is to be installed. Otherwise, a fire may occur.
- When installing several Ezi-SERVO in a sealed place, install a cooling fan to keep the ambient temperature of the Ezi-SERVO as 50℃ or lower. Otherwise, a fire or other kinds of accidents may occur due to overheating.




Warning

- The process of installation, connection, operation, checking and repairing should be done with qualified person. Otherwise, a fire or other kinds of accidents may occur.,


1.5 Connect Cables

 Attention	<ul style="list-style-type: none"> ■ Keep the rated range of Input Voltage for Ezi-SERVO. Otherwise, a fire or other kinds of accidents may occur. ■ Cable connection should follow the wiring diagram. Otherwise, a fire or other kinds of accidents may occur.
 Warning	<ul style="list-style-type: none"> ■ Before connecting cables check if input power OFF. Otherwise, an electric shock or a fire may occur. ■ The case of Ezi-SERVO is insulated from the ground of the internal circuit by the condenser. Ground the Ezi-SERVO. Otherwise, an electric shock or a fire may occur.

1.6 Operation

 Attention	<ul style="list-style-type: none"> ■ If a protection function(alarm) occurs, firstly remove its cause and then release(alarm reset) the protection function. If you operate continuously without removing its cause, the machine get damaged or the user may get injured. ■ Do not make Motor Free and make input signal to ON during operation. Motor will stop and stop current will become zero. The machine may get damaged or the user may get injured. ■ All parameter values are set by default factory setting value. Change this value after reading this manual thoroughly. Otherwise, the machine may get damaged or other kinds of accidents may occur.
--	--

1.7 Check and Repair

 Warning	<ul style="list-style-type: none"> ■ Stop to supply power to the main circuit and wait for a while before checking or repairing the Ezi-SERVO. Electricity remaining in the capacitor may occur danger. ■ Do not change cabling while power is being supplied. Otherwise, the user may get injured or the product may get damaged. ■ Do not reconstruct the Ezi-SERVO. Otherwise, an electric shock may occur or the reconstructed product can not get after service.
--	--

Presented 「Ezi-SERVO Plus-R User Manual “Communication Function”」 explains RS-485 communication functions of Ezi-SERVO Plus-R. Here are 「[User Manual_ Text](#)」, 「[User Manual_User Program\(GUI\)](#)」 in this manual. Please utilize our product afterward understanding about proper usage method with reading these contents carefully.

2. Communication Protocols

2.1 Communication Functions

Ezi-SERVO Plus-R can control up to 16 axes by multidrop link at RS-485(two-wire).



Attention

- Pay attention that when Windows goes into standby or power-save mode, serial communication is basically disconnected. When the system is recovered from standby mode, it should be connected again with serial communication. This is also applicable to the library provided.

2.1.1 Communication Specifications

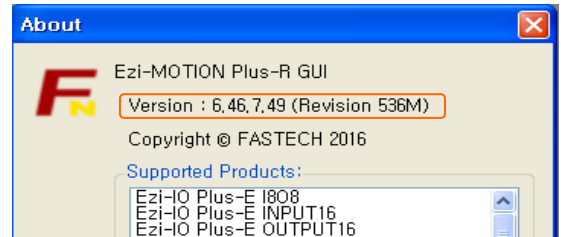
Specification	RS-485
Communication Type	Asynchronous
	Half-duplex
Baud Rate [bps]	19200, 38400, 57600, 115200, 230400, 460800, 921600
Data Type	8bit Binary
Parity	No
Stop Bit	1bit
CRC Check	Yes
Max Cabling Length (Converter ↔ Drive)	30 m
Min Cable length between drive	More than 60 cm
Number of Connected Axes	16 axes (No. 0~F)

2.1.2 RS-485 Communication Protocol

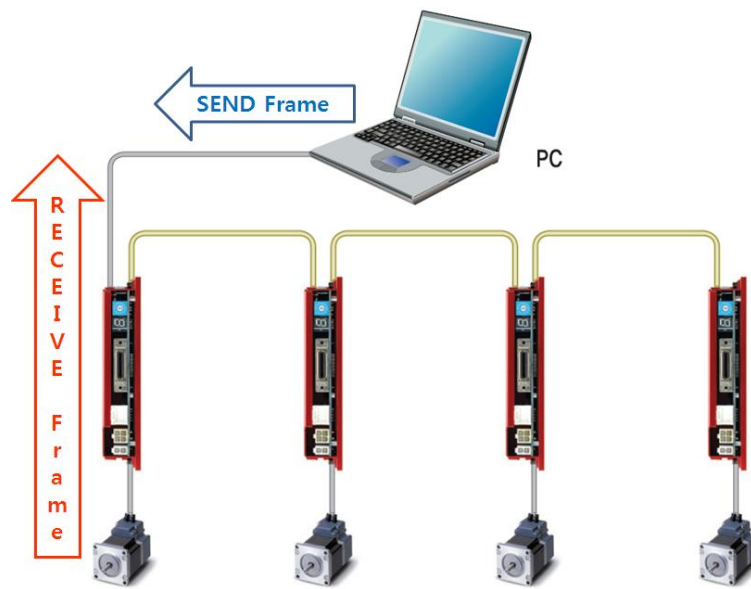
There are 2 kinds of program version for driver. This manual support for **Version 6** level.

Type	Firmware version	compatability	User Program(GUI) version
1	Level 6 (V06.0x.0xx.xx)	<->	Level 6 (6.xx.x.xxx)
2	Level 8 (V08.xx.0xx.xx)	<->	Level 8 (8.xx.x.xxx)

After connect the User Program(GUI), version number can be check in 'About Plus-R GUI...'menu in 'Help' menu.



1) Overview of communication FRAME



2) Basic structure of Frame

Header	Frame Data	Tail
0xAA 0xCC	4~252 bytes	0xAA 0xEE

- ① 0xAA : Delimited byte.
- ② 0xAA 0xCC : Displays that the Frame locates in header.
- ③ 0xAA 0xEE : Displays that the Frame locates in tail.
- ④ If any of the Frame data is '0xAA', '0xAA' should be added right after it. (byte stuffing *1)
- ⑤ If any data following '0xAA' is not '0xAA', '0xCC' or '0xEE', it displays that an error has occurred.

Detailed **Frame Data** is configured as follows:

Slave ID	Frame type	Data	CRC	
1 byte	1 byte	0 ~ 248 bytes.	2 bytes	
			Low byte	High byte

- ① Slave ID : Drive module number (0~15) connected to the PC communication port.
- ② Frame type : To designate command type of relevant frames. For the command type, refer to 「Frame Type and Data Configuration」 section.
- ③ Data : Data structure and length is set according to Frame type. For more information, refer to 「Frame Type and Data Configuration」 section.
- ④ CRC : To check that an error occurs during communication, '0xA001' of a polynomial factor in **CRC16(Cyclic Redundancy Check)** is used. Or 'X¹⁶+X¹⁵+X²+1' of a polynomial factor in CRC-16-IBM(Cyclic Redundancy Check) is used. CRC calculation is performed for all items (Slave ID, Frame type, Data) prior to CRC item.

*1. Byte stuffing : add the 'byte' to frame data section for distinguish 'Header' and 'Tail' frame data.

2.1.3 CRC Calculation Example

The following program source is included in a file (file name : CRC_Checksum.c) provided with the product.

1)'0xA001' of CRC16

```
const unsigned short TABLE_CRCVALUE[] =
{
    0X0000, 0XC0C1, 0XC181, 0X0140, 0XC301, 0X03C0, 0X0280, 0XC241,
    0XC601, 0X06C0, 0X0780, 0XC741, 0X0500, 0XC5C1, 0XC481, 0X0440,
    0XCC01, 0X0CC0, 0X0D80, 0XCD41, 0X0F00, 0XCFC1, 0XCE81, 0X0E40,
    0X0A00, 0XCAC1, 0XCB81, 0X0B40, 0XC901, 0X09C0, 0X0880, 0XC841,
    0XD801, 0X18C0, 0X1980, 0XD941, 0X1B00, 0XDBC1, 0XDA81, 0X1A40,
    0X1E00, 0XDEC1, 0XDF81, 0X1F40, 0XDD01, 0X1DC0, 0X1C80, 0XDC41,
    0X1400, 0XD4C1, 0XD581, 0X1540, 0XD701, 0X17C0, 0X1680, 0XD641,
    0XD201, 0X12C0, 0X1380, 0XD341, 0X1100, 0XD1C1, 0XD081, 0X1040,
    0XF001, 0X30C0, 0X3180, 0XF141, 0X3300, 0XF3C1, 0XF281, 0X3240,
    0X3600, 0XF6C1, 0XF781, 0X3740, 0XF501, 0X35C0, 0X3480, 0XF441,
    0X3C00, 0XFCC1, 0XFD81, 0X3D40, 0XFF01, 0X3FC0, 0X3E80, 0XFE41,
    0XFA01, 0X3AC0, 0X3B80, 0XFB41, 0X3900, 0XF9C1, 0XF881, 0X3840,
    0X2800, 0XE8C1, 0XE981, 0X2940, 0XEB01, 0X2BC0, 0X2A80, 0XEA41,
    0XEE01, 0X2EC0, 0X2F80, 0XEF41, 0X2D00, 0XEDC1, 0XEC81, 0X2C40,
    0XE401, 0X24C0, 0X2580, 0XE541, 0X2700, 0XE7C1, 0XE681, 0X2640,
    0X2200, 0XE2C1, 0XE381, 0X2340, 0XE101, 0X21C0, 0X2080, 0XE041,
    0XA001, 0X60C0, 0X6180, 0XA141, 0X6300, 0XA3C1, 0XA281, 0X6240,
    0X6600, 0XA6C1, 0XA781, 0X6740, 0XA501, 0X65C0, 0X6480, 0XA441,
    0X6C00, 0XACC1, 0XAD81, 0X6D40, 0XAF01, 0X6FC0, 0X6E80, 0XAE41,
    0XAA01, 0X6AC0, 0X6B80, 0XAB41, 0X6900, 0XA9C1, 0XA881, 0X6840,
```

```

0X7800, 0XB8C1, 0XB981, 0X7940, 0XBB01, 0X7BC0, 0X7A80, 0XBA41,
0XBE01, 0X7EC0, 0X7F80, 0XBF41, 0X7D00, 0XBDC1, 0XBC81, 0X7C40,
0XB401, 0X74C0, 0X7580, 0XB541, 0X7700, 0XB7C1, 0XB681, 0X7640,
0X7200, 0XB2C1, 0XB381, 0X7340, 0XB101, 0X71C0, 0X7080, 0XB041,
0X5000, 0X90C1, 0X9181, 0X5140, 0X9301, 0X53C0, 0X5280, 0X9241,
0X9601, 0X56C0, 0X5780, 0X9741, 0X5500, 0X95C1, 0X9481, 0X5440,
0X9C01, 0X5CC0, 0X5D80, 0X9D41, 0X5F00, 0X9FC1, 0X9E81, 0X5E40,
0X5A00, 0X9AC1, 0X9B81, 0X5B40, 0X9901, 0X59C0, 0X5880, 0X9841,
0X8801, 0X48C0, 0X4980, 0X8941, 0X4B00, 0X8BC1, 0X8A81, 0X4A40,
0X4E00, 0X8EC1, 0X8F81, 0X4F40, 0X8D01, 0X4DC0, 0X4C80, 0X8C41,
0X4400, 0X84C1, 0X8581, 0X4540, 0X8701, 0X47C0, 0X4680, 0X8641,
0X8201, 0X42C0, 0X4380, 0X8341, 0X4100, 0X81C1, 0X8081, 0X4040
};
unsigned short CalcCRC(unsigned char* pDataBuffer, unsigned long usDataLen)
{
    unsigned char nTemp;
    unsigned short wCRCWord = 0xFFFF;

    while (usDataLen--)
    {
        nTemp = wCRCWord ^ *(pDataBuffer++);
        wCRCWord >>= 8;
        wCRCWord ^= TABLE_CRCVALUE[nTemp];
    }
    return wCRCWord;
}

```

2) 'X16+X15+X2+1' of CRC-16-IBM

```

unsigned short CalcCRCbyAlgorithm(unsigned char* pDataBuffer, unsigned long usDataLen)
{
    const unsigned short POLYNOMIAL = 0xA001;
    unsigned short wCrc;
    int iByte, iBit;

    /* Initialize CRC */
    wCrc = 0xffff;

    for (iByte = 0; iByte < usDataLen; iByte++)

```

```
{
    /* Exclusive-OR the byte with the CRC */
    wCrc ^= *(pDataBuffer + iByte);

    /* Loop through all 8 data bits */

    for (iBit = 0; iBit <= 7; iBit++)
    {
        /* If the LSB is 1, shift the CRC and XOR the polynomial mask with the CRC */

        // Note - the bit test is performed before the rotation, so can't move the << here
        if (wCrc & 0x0001)
        {
            wCrc >>= 1;
            wCrc ^= POLYNOMIAL;
        }
        else
        {
            // Just rotate it
            wCrc >>= 1;
        }
    }
}
return wCrc;
}
```

2.1.4 Response Frame Structure and Communication Error(V6)

When any command is sent, the basic structure of Frame at the response side is same. However, there is a difference in case of **Frame Data**, which 'communication status' is added as shown below.

Slave ID	Frame type	Data		CRC	
1 byte	1 byte	1 byte.	0 ~ 247bytes.	2 bytes	
		Communication status	Response data	Low byte	High byte

① Slave ID : Same to sending Frame.

(When this is not same to sending data, it should be recognized as the error status.)

② Frame type : Same to sending Frame.

(When this is not same to sending data, it should be recognized as the error status.)

③ Data : When simple executive instructions are sent, this data cannot be read. However, in case of response, 1 byte is added to display the communication status (error / normal).

The code by bytes means the '**Communication status**' as follows.

Hexa code	Decimal code	Description
0x00	0	Communication is normal.
0x80	128	Frame Type Error : Responded Frame type cannot be recognized.
0x81	129	Data error, ROM data read/write error : Data value responded is without the given range.
0x82	130	Received Frame Error : Frame data received is out of this specification.
0x85	133	Running Command Failure : The user has tried to execute new running commands in wrong condition as follows. 1) currently motor is running 2) currently motor is stopping 3) currently Servo is OFF status 4) try to Z-pulse Origin without encoder other wrong motion command
0x86	134	RESET Failure : The user has tried to execute new running commands in wrong condition as follows. 1) While the servo is ON 2) Already RESET in ON by external input signal
0x87	135	Servo ON Failure ① : While an alarm occurs, the user has tried to execute Servo ON command.
0x88	136	Servo ON Failure ② : While Emergency Stop occurs, the user has tried to execute Servo ON command.
0x89	137	Servo ON Failure ③ : 'ServoON' signal is assigned to input pin already. Servo ON/OFF can execute by external input signal only.
0x8A	138	Servo OFF Failure : While the Servo ON process is working, the user has tried to execute Servo OFF command.
0xAA	170	CRC Error : Frame data received is out of CRC format. In this case, DLL Library of sending side automatically try to send 1 more time.

2.2 Structure of Frame type

2.2.1 Frame type and Data Configuration(Ezi-SERVO Plus-R standard)

Frame type	Library Name	Contents						
0x01 (1)	FAS_ GetSlaveInfo	<p>Connected slave type and program version information are required.</p> <p>Sending : 0 byte</p> <p>Response : 1~248 bytes</p> <table><tr><td>1 byte</td><td>1 byte</td><td>0~246 bytes</td></tr><tr><td>Communication status</td><td>Slave type</td><td>ACII string with NULL byte (strlen() + 1 bytes)</td></tr></table> <p>◆ Slave type : 1 : Ezi-SERVO Plus-R ST 20 : Ezi-STEP Plus-R ST 50 : Ezi-SERVO Plus-R MINI etc</p>	1 byte	1 byte	0~246 bytes	Communication status	Slave type	ACII string with NULL byte (strlen() + 1 bytes)
1 byte	1 byte	0~246 bytes						
Communication status	Slave type	ACII string with NULL byte (strlen() + 1 bytes)						
0x05 (5)	FAS_ GetMotorInfo	<p>Connected motor type and maker information are required.</p> <p>Sending : 0 byte</p> <p>Response : 1~248 bytes</p> <table><tr><td>1 byte</td><td>1 byte</td><td>0~246 bytes</td></tr><tr><td>Communication status</td><td>Motor type (1~255)</td><td>ACII string with NULL byte (strlen() + 1 bytes)</td></tr></table>	1 byte	1 byte	0~246 bytes	Communication status	Motor type (1~255)	ACII string with NULL byte (strlen() + 1 bytes)
1 byte	1 byte	0~246 bytes						
Communication status	Motor type (1~255)	ACII string with NULL byte (strlen() + 1 bytes)						
0x10 (16)	FAS_ SaveAllParameters	<p>Current setting parameters & assign of IO signals are saved in the ROM of the drive. Even though the drive is powered off, saving these must be possible. Values set at 'FAS_SetParameter' & 'FAS_SetIOAssignMap' are saved together.</p> <p>Sending : 0 byte</p> <p>Response : 1 byte</p> <table><tr><td>1 byte</td></tr><tr><td>Communication status</td></tr></table>	1 byte	Communication status				
1 byte								
Communication status								
0x11 (17)	FAS_ GetRomParameter	<p>Specific parameter values in the ROM are read.</p> <p>Sending: 1 byte</p> <table><tr><td>1 byte</td></tr><tr><td>Parameter number (0~38)</td></tr></table>	1 byte	Parameter number (0~38)				
1 byte								
Parameter number (0~38)								

		<p>Response: 5 bytes</p> <table><tr><td>1 byte</td><td>4 bytes</td></tr><tr><td>Communication status</td><td>Parameter value</td></tr></table> <p>Refer to 「2.2.2. Parameter List 」.</p>	1 byte	4 bytes	Communication status	Parameter value		
1 byte	4 bytes							
Communication status	Parameter value							
0x12 (18)	FAS_ SetParameter	<p>Specific parameter values are saved to the RAM.</p> <p>Sending : 5 bytes</p> <table><tr><td>1 byte</td><td>4 bytes</td></tr><tr><td>Parameter number (0~38)</td><td>Parameter value</td></tr></table> <p>Response: 1 byte</p> <table><tr><td>1 byte</td></tr><tr><td>Communication status</td></tr></table> <p>Refer to 「2.2.2. Parameter List 」.</p>	1 byte	4 bytes	Parameter number (0~38)	Parameter value	1 byte	Communication status
1 byte	4 bytes							
Parameter number (0~38)	Parameter value							
1 byte								
Communication status								
0x13 (19)	FAS_ GetParameter	<p>Specific parameter values in the RAM are read</p> <p>Sending : 1 byte</p> <table><tr><td>1 byte</td></tr><tr><td>Parameter number (0~38)</td></tr></table> <p>Response: 5 bytes</p> <table><tr><td>1 byte</td><td>4 bytes</td></tr><tr><td>Communication status</td><td>Parameter value</td></tr></table> <p>Refer to 「2.2.2. Parameter List.</p>	1 byte	Parameter number (0~38)	1 byte	4 bytes	Communication status	Parameter value
1 byte								
Parameter number (0~38)								
1 byte	4 bytes							
Communication status	Parameter value							

0x20 (32)	FAS_ SetIOOutput	<p>Output signal level of the control output port is set.</p> <p>Sending : 8 bytes</p> <table><tr><td>4 bytes</td><td>4 bytes</td></tr><tr><td>I/O set mask value</td><td>I/O clear mask value</td></tr></table> <p>When specific bit of the set mask is '1', the relevant output port signal is set to [ON].</p> <p>When specific bit of the clear mask is '1', the relevant output port signal is set to [OFF]. For more information, refer to 「2-2-3.Bit setup of Output Pin」 .</p> <p>Response : 1 byte</p> <table><tr><td>1 byte</td></tr><tr><td>Communication status</td></tr></table>	4 bytes	4 bytes	I/O set mask value	I/O clear mask value	1 byte	Communication status
4 bytes	4 bytes							
I/O set mask value	I/O clear mask value							
1 byte								
Communication status								
0x21 (33)	FAS_ SetIOInput	<p>Input signal level of the control input port is set.</p> <p>Sending : 8 bytes</p> <table><tr><td>4 bytes</td><td>4 bytes</td></tr><tr><td>I/O set mask value</td><td>I/O clear mask value</td></tr></table> <p>When specific bit of the set mask is '1', the relevant input port signal is set to [ON].</p> <p>When specific bit of the clear mask is '1', the relevant input port signal is set to [OFF]. For more information, refer to 「2-2-4. Bit setup of Input Pin」 .</p> <p>Response : 1 byte</p> <table><tr><td>1 byte</td></tr><tr><td>Communication status</td></tr></table>	4 bytes	4 bytes	I/O set mask value	I/O clear mask value	1 byte	Communication status
4 bytes	4 bytes							
I/O set mask value	I/O clear mask value							
1 byte								
Communication status								
0x22 (34)	FAS_ GetIOInput	<p>Current input signal status of the control input port is read.</p> <p>Sending : 0 byte</p> <p>Response : 5 byte</p> <table><tr><td>1 byte</td><td>4 bytes</td></tr><tr><td>Communication status</td><td>Input status value</td></tr></table> <p>Relevant bit by each input signal, refer to 「2-2-4. Bit setup of Input Pin」 .</p>	1 byte	4 bytes	Communication status	Input status value		
1 byte	4 bytes							
Communication status	Input status value							

0x23 (35)	FAS_ GetIOOutput	<p>Current output signal status of the control output port is read.</p> <p>Sending : 0 byte</p> <p>Response : 5 byte</p> <table><tr><td>1 byte</td><td>4 bytes</td></tr><tr><td>Communication status</td><td>Output status value</td></tr></table> <p>Relevant bit by each output signal, refer to 「2-2-3.Bit setup of Output Pin」 .</p>	1 byte	4 bytes	Communication status	Output status value				
1 byte	4 bytes									
Communication status	Output status value									
0x24 (36)	FAS_ SetIOAssignMap	<p>To assign control I/O signals to the pin of CN1 port and set the signal level. By running 'FAS_SaveAllParameters', you can save the setting value to the ROM.</p> <p>Sending : 6 bytes</p> <table><tr><td>1 byte</td><td>4 bytes</td><td>1 byte</td></tr><tr><td>I/O number</td><td>I/O pin masking data</td><td>Setting level</td></tr></table> <p>◆I/O number: '0~11' corresponds to 'Limit+, Limit-, Org,IN1,..., IN9' respectively, and '12~22' corresponds to 'COMP, OUT1,..., OUT9' respectively.</p> <p>◆I/O pin masking data: Refer to 「2-2-4. Bit setup of Input Pin」 .</p> <p>◆Level Setting: 0:Active Low, 1:Active High</p> <p>◆For change IO assign during operation, the reset function (set IO masking value to '0') is needed before change.</p> <p>Response : 1 byte</p> <table><tr><td>1 byte</td></tr><tr><td>Communication status</td></tr></table>	1 byte	4 bytes	1 byte	I/O number	I/O pin masking data	Setting level	1 byte	Communication status
1 byte	4 bytes	1 byte								
I/O number	I/O pin masking data	Setting level								
1 byte										
Communication status										
0x25 (37)	FAS_ GetIOAssignMap	<p>Pin setting status of CN1 port is read from RAM area.</p> <p>Sending : 1 byte</p> <table><tr><td>1 byte</td></tr><tr><td>I/O number</td></tr></table> <p>◆I/O number: '0~11' corresponds to 'Limit+, Limit-, Org, IN1, ..., IN9' respectively, and '12~22' corresponds to 'COMP, OUT1, ..., OUT9' respectively.</p> <p>Response : 6 bytes</p> <table><tr><td>1 byte</td><td>4 bytes</td><td>1 byte</td></tr><tr><td>Communication status</td><td>IO pin masking status</td><td>Level status</td></tr></table> <p>For more information, refer to '0x24' Frame type.</p>	1 byte	I/O number	1 byte	4 bytes	1 byte	Communication status	IO pin masking status	Level status
1 byte										
I/O number										
1 byte	4 bytes	1 byte								
Communication status	IO pin masking status	Level status								

0x26 (38)	FAS_ IOAssignMapReadROM	Pin setting status of CN1 port is loaded to RAM from ROM area.		
		Sending : 0 byte		
		Response : 2 bytes		
		1 byte	1 byte	
		Communication status	Command performing status (0 : complete, values except 0: error)	
0x27 (39)	FAS_ TriggerOutput_RunA	Start/Stop command for 'Compare Out' signal		
		Sending : 18 bytes		
		1 byte	4 bytes	4 byte
		Output start/stop (1:start 0:stop)	Pulse start position [pulse]	Pulse period [pulse]
		4 byte	1 bytes	4 byte
		Pulse width [msec]	Output pin number (fix to 0)	spare
		◆ Pulse start position: Setting the start position of first pulse output. (-134,217,727 ~134,217,727)		
		◆ Pulse period: Setting the pulse period. (1 ~134,217,727) (0: pulse output only 1 time in pulse start position 1~ : pulse output repeatedly depends on setting)		
		◆ Pulse width: Setting the pulse width. (1~1000)		
		Caution : 'Pulse width' calculation formula is display in UserManual_Text (Trigger Pulse Output).		
		Response : 2 byte		
		1 byte	1 byte	
		Communication status	Command performing status (0 : complete, values except 0: error)	
		(This function is not supported for Ezi-SERVO ALL-28.)		
0x28 (40)	FAS_ TriggerOutput_Status	Command to check if the trigger output pulse is working or not.		
		Sending : 0 byte		
		Response : 2 byte		
		1 byte	1 bytes	
		Communication status	Status (1:output ON, 0 :output OFF)	

0x2A (42)	FAS_ ServoEnable	Servo ON/OFF status is set. Sending : 1 byte <table><tr><td>1 byte</td></tr><tr><td>0:OFF, 1:ON</td></tr></table> Response : 1 byte <table><tr><td>1 byte</td></tr><tr><td>Communication status</td></tr></table>	1 byte	0:OFF, 1:ON	1 byte	Communication status
1 byte						
0:OFF, 1:ON						
1 byte						
Communication status						
0x2B (43)	FAS_ ServoAlarmReset	Servo alarm status is reset. Sending : 0 byte Response : 1 byte <table><tr><td>1 byte</td></tr><tr><td>Communication status</td></tr></table>	1 byte	Communication status		
1 byte						
Communication status						
0x2E (46)	FAS_ GetAlarmType	To request the Alarm type Sending: 0 byte Response: 2 byte <table><tr><td>1 byte</td><td>1 bytes</td></tr><tr><td>Communication status</td><td>Alarm type (0~)</td></tr></table> ◆ Alarm type: No alarm (0) OverCurrent(1) OverSpeed(2) StepOut(3) OverLoad(4) OverTemperature(5) BackEMF(6) MotorConnect(7) EncoderConnect(8) MotorPower(9) Inposition(10) SystemHalt(11) ROMdevice(12) Position Overflow(15)	1 byte	1 bytes	Communication status	Alarm type (0~)
1 byte	1 bytes					
Communication status	Alarm type (0~)					
0x31 (49)	FAS_ MoveStop	To request to stop running the motor Sending : 0 byte Response : 1 byte <table><tr><td>1 byte</td></tr><tr><td>Communication status</td></tr></table>	1 byte	Communication status		
1 byte						
Communication status						

0x32 (50)	FAS_ EmergencyStop	To request the running motor to stop emergently					
		Sending : 0 byte					
		Response : 1 byte					
		<table><tr><td colspan="2">1 byte</td></tr><tr><td colspan="2">Communication status</td></tr></table>		1 byte		Communication status	
1 byte							
Communication status							
0x33 (51)	FAS_ MoveOriginSingleAxis	To request the motor to return to the origin at the current setting parameter condition					
		Sending : 0 byte					
		Response : 1 byte					
		<table><tr><td colspan="2">1 byte</td></tr><tr><td colspan="2">Communication status</td></tr></table>		1 byte		Communication status	
1 byte							
Communication status							
0x34 (52)	FAS_ MoveSingleAxisAbsPos	To request the motor to move its position as much as the absolute value[pulse]					
		Sending : 8 bytes					
		<table><tr><td>4 bytes</td><td>4 bytes</td></tr><tr><td>Absolute position value</td><td>Running speed [pps]</td></tr></table>	4 bytes	4 bytes	Absolute position value	Running speed [pps]	
4 bytes	4 bytes						
Absolute position value	Running speed [pps]						
		Response : 1 byte					
		<table><tr><td colspan="2">1 byte</td></tr><tr><td colspan="2">Communication status</td></tr></table>		1 byte		Communication status	
1 byte							
Communication status							
0x35 (53)	FAS_ MoveSingleAxisIncPos	To request the motor to move its position as much as the incremental value[pulse]					
		Sending : 8 bytes					
		<table><tr><td>4 bytes</td><td>4 bytes</td></tr><tr><td>Incremental position value</td><td>Running speed [pps]</td></tr></table>	4 bytes	4 bytes	Incremental position value	Running speed [pps]	
4 bytes	4 bytes						
Incremental position value	Running speed [pps]						
		Response : 1 byte					
		<table><tr><td colspan="2">1 byte</td></tr><tr><td colspan="2">Communication status</td></tr></table>		1 byte		Communication status	
1 byte							
Communication status							

0x36 (54)	FAS_ MoveToLimit	<p>To request the motor to start limit motion at the current setting parameter condition</p> <p>Sending : 5 bytes</p> <table><tr><td>4 bytes</td><td>1 byte</td></tr><tr><td>Running speed [pps]</td><td>Running direction (0: -Limit 1: +Limit)</td></tr></table> <p>Response : 1 byte</p> <table><tr><td>1 byte</td></tr><tr><td>Communication status</td></tr></table>	4 bytes	1 byte	Running speed [pps]	Running direction (0: -Limit 1: +Limit)	1 byte	Communication status
4 bytes	1 byte							
Running speed [pps]	Running direction (0: -Limit 1: +Limit)							
1 byte								
Communication status								
0x37 (55)	FAS_ MoveVelocity	<p>To request the motor to start jog motion at the current setting parameter condition</p> <p>Sending : 5 bytes</p> <table><tr><td>4 bytes</td><td>1 byte</td></tr><tr><td>Running speed [pps]</td><td>Running direction (0: -Jog 1: +Jog)</td></tr></table> <p>Response : 1 byte</p> <table><tr><td>1 byte</td></tr><tr><td>Communication status</td></tr></table>	4 bytes	1 byte	Running speed [pps]	Running direction (0: -Jog 1: +Jog)	1 byte	Communication status
4 bytes	1 byte							
Running speed [pps]	Running direction (0: -Jog 1: +Jog)							
1 byte								
Communication status								
0x38 (56)	FAS_ PositionAbsOverride	<p>To request the motor to change the target absolute position value[pulse] while it is in running.</p> <p>Sending : 4 bytes</p> <table><tr><td>4 bytes</td></tr><tr><td>Changed command position value [pulse]</td></tr></table> <p>Response : 1 byte</p> <table><tr><td>1 byte</td></tr><tr><td>Communication status</td></tr></table>	4 bytes	Changed command position value [pulse]	1 byte	Communication status		
4 bytes								
Changed command position value [pulse]								
1 byte								
Communication status								

0x39 (57)	FAS_ PositionIncOverride	<p>To request the motor to change the target incremental position value[pulse] while it is in running.</p> <p>Sending : 4 bytes</p> <table><tr><td>4 bytes</td></tr><tr><td>Changed command position value [pulse]</td></tr></table> <p>Response : 1 byte</p> <table><tr><td>1 byte</td></tr><tr><td>Communication status</td></tr></table>	4 bytes	Changed command position value [pulse]	1 byte	Communication status
4 bytes						
Changed command position value [pulse]						
1 byte						
Communication status						
0x3A (58)	FAS_ VelocityOverride	<p>To request the motor to change the running speed value[pps] while it is in running.</p> <p>Sending : 4 bytes</p> <table><tr><td>4 bytes</td></tr><tr><td>Changed running speed [pps]</td></tr></table> <p>The accel/decel time is assigned to 'Axis Acc Time' and 'Axis Dec Time' value in parameter lists.</p> <p>Response : 1 byte</p> <table><tr><td>1 byte</td></tr><tr><td>Communication status</td></tr></table> <p>Caution : 'Changed running speed' must be over 30[pps].</p>	4 bytes	Changed running speed [pps]	1 byte	Communication status
4 bytes						
Changed running speed [pps]						
1 byte						
Communication status						
0x3B (59)	FAS_ AllMoveStop	<p>To request stop for all motor that connected in same port.</p> <p>Sending : 0 byte (Slave number must be '99')</p> <p>Response : no response</p>				
0x3C (60)	FAS_ AllEmergencyStop	<p>To request emergency stop for all motor that connected in same port.</p> <p>Sending : 0 byte (Slave number must be '99')</p> <p>Response : no response</p>				
0x3D (61)	FAS_All MoveOriginSingleAxis	<p>To request return to the origin at the current setting parameter condition for all motors that connected in same port.</p> <p>Sending : 0 byte (Slave number must be '99')</p> <p>Response : no response</p>				

0x3E (62)	FAS_All SingleAxisAbsPos	<p>To request move its position as much as the absolute value[pulse] for all motors that connected in same port.</p> <p>Sending : 8 bytes (Slave number must be '99')</p> <table><tr><td>4 bytes</td><td>4 bytes</td></tr><tr><td>Absolute position value</td><td>Running speed [pps]</td></tr></table> <p>Response : no response</p>	4 bytes	4 bytes	Absolute position value	Running speed [pps]								
4 bytes	4 bytes													
Absolute position value	Running speed [pps]													
0x3F (63)	FAS_All SingleAxisIncPos	<p>To request move its position as much as the incremental value[pulse] for all motors that connected in same port.</p> <p>Sending : 8 bytes (Slave number must be '99')</p> <table><tr><td>4 bytes</td><td>4 bytes</td></tr><tr><td>incremental position value</td><td>Running speed [pps]</td></tr></table> <p>Response : no response</p>	4 bytes	4 bytes	incremental position value	Running speed [pps]								
4 bytes	4 bytes													
incremental position value	Running speed [pps]													
0x80 (128)	FAS_ MoveSingleAxisAbsPos Ex	<p>Request the motor to move its position as much as the absolute value[pulse] with Custom Accel. / Decel. time[msec]</p> <p>Sending: 40 bytes</p> <table><tr><td>4 bytes</td><td>4 bytes</td><td>4 bytes</td><td>2 bytes</td></tr><tr><td>Absolute position value</td><td>Running speed [pps]</td><td>Flag option</td><td>Custom Accel. Time (1~9999)</td></tr></table> <table><tr><td>2 bytes</td><td>24 bytes</td></tr><tr><td>Custom Decel. Time (1~9999)</td><td>Reserved</td></tr></table> <p>Flag ooption : 0x0001 : reserved</p> <p>0x0002 : Custom Accel. Time is used.</p> <p>0x0004 : Custom Decel. Time is used.</p> <p>If the Flag bit is OFF status(0), Accel./Decel. time value is used that saved in controller.</p> <p>Response: 1 byte</p>	4 bytes	4 bytes	4 bytes	2 bytes	Absolute position value	Running speed [pps]	Flag option	Custom Accel. Time (1~9999)	2 bytes	24 bytes	Custom Decel. Time (1~9999)	Reserved
4 bytes	4 bytes	4 bytes	2 bytes											
Absolute position value	Running speed [pps]	Flag option	Custom Accel. Time (1~9999)											
2 bytes	24 bytes													
Custom Decel. Time (1~9999)	Reserved													
0x81 (129)	FAS_ MoveSingleAxisIncPos Ex	<p>Request the motor to move its position as much as the absolute value[pulse] with Custom Accel. / Decel. Time[msec]</p> <p>Sending: 40 bytes</p>												

		<table><tr><td>4 bytes</td><td>4 bytes</td><td>4 bytes</td><td>2 bytes</td></tr><tr><td>incremental position value</td><td>Running speed [pps]</td><td>Flag option</td><td>Custom Accel. Time (1~9999)</td></tr></table> <table><tr><td>2 bytes</td><td>24 bytes</td></tr><tr><td>Custom Decel. Time (1~9999)</td><td>Reserved</td></tr></table> <p>Flag option : 0x0001 : reserved</p> <p>0x0002 : Custom Accel. Time is used.</p> <p>0x0004 : Custom Decel. Time is used.</p> <p>If the Flag bit is OFF status(0), Accel./Decel. Time value is used that saved in controller.</p> <p>Response: 1 byte</p>	4 bytes	4 bytes	4 bytes	2 bytes	incremental position value	Running speed [pps]	Flag option	Custom Accel. Time (1~9999)	2 bytes	24 bytes	Custom Decel. Time (1~9999)	Reserved
4 bytes	4 bytes	4 bytes	2 bytes											
incremental position value	Running speed [pps]	Flag option	Custom Accel. Time (1~9999)											
2 bytes	24 bytes													
Custom Decel. Time (1~9999)	Reserved													
0x82 (130)	FAS_ MoveVelocityEx	<p>Request the motor to start jog motion at the current setting parameter condition with custom Accel/Decel time value[msec].</p> <p>Sending: 37 bytes</p> <table><tr><td>4 bytes</td><td>1 bytes</td><td>4 bytes</td></tr><tr><td>Running speed [pps]</td><td>Running direction (0: -Jog 1: +Jog)</td><td>Flag option</td></tr></table> <table><tr><td>2 bytes</td><td>26 bytes</td></tr><tr><td>Custom Accel./Decel. Time (1~9999)</td><td>Reserved</td></tr></table> <p>Flag option : 0x0001 : reserved</p> <p>0x0002 : Custom Accel./Decel. Time is used.</p> <p>If the Flag bit is OFF status(0), Accel./Decel. Time value is used that saved in controller.</p> <p>Response : 1 byte</p>	4 bytes	1 bytes	4 bytes	Running speed [pps]	Running direction (0: -Jog 1: +Jog)	Flag option	2 bytes	26 bytes	Custom Accel./Decel. Time (1~9999)	Reserved		
4 bytes	1 bytes	4 bytes												
Running speed [pps]	Running direction (0: -Jog 1: +Jog)	Flag option												
2 bytes	26 bytes													
Custom Accel./Decel. Time (1~9999)	Reserved													
	FAS_MoveLinearAbsPos	<p>To request Linear Interpolation move its position as much as the absolute value[pulse] for more than 2 motors that connected in same port.</p> <p>Refer to 「3. Library for PC program」</p>												

	FAS_MoveLinearIncPos	To request Linear Interpolation move its position as much as the incremental value[pulse] for more than 2 motors that connected in same port. Refer to 「 3. Library for PC program 」 .															
0x40 (64)	FAS_GetAxisStatus	To request the Flag value of displaying the running status Sending : 0 byte Response : 5 bytes <table><tr><td>1 byte</td><td>4 bytes</td></tr><tr><td>Communication status</td><td>Status flag value</td></tr></table> For bit related to each Flag, refer to 「 2-2-5. Bit setup of Status Flag 」				1 byte	4 bytes	Communication status	Status flag value								
1 byte	4 bytes																
Communication status	Status flag value																
0x41 (65)	FAS_GetIOAxisStatus	To request the I/O status and the running Flag status. (Frame type 0x22, 0x23, and 0x40 are packed.) Sending : 0 byte Response : 13 bytes <table><tr><td>1 byte</td><td>4 bytes</td><td>4 bytes</td><td>4 bytes</td></tr><tr><td>Communication status</td><td>Input status value</td><td>Output status value</td><td>Status flag value</td></tr></table>				1 byte	4 bytes	4 bytes	4 bytes	Communication status	Input status value	Output status value	Status flag value				
1 byte	4 bytes	4 bytes	4 bytes														
Communication status	Input status value	Output status value	Status flag value														
0x42 (66)	FAS_GetMotionStatus	To request the current running progress status and its PT number (Frame type 0x51, 0x53, 0x54, and 0x55 are packed.) Sending : 0 byte Response : 21 bytes <table><tr><td>1 byte</td><td>4 bytes</td><td>4 bytes</td><td>4 bytes</td><td>4 bytes</td><td>4 bytes</td></tr><tr><td>Communication status</td><td>Command position value</td><td>Actual Position value</td><td>Position Difference value</td><td>Running speed value</td><td>Current running PT number</td></tr></table>				1 byte	4 bytes	4 bytes	4 bytes	4 bytes	4 bytes	Communication status	Command position value	Actual Position value	Position Difference value	Running speed value	Current running PT number
1 byte	4 bytes	4 bytes	4 bytes	4 bytes	4 bytes												
Communication status	Command position value	Actual Position value	Position Difference value	Running speed value	Current running PT number												

0x43 (67)	FAS_ GetAllStatus	<p>To request all data including the current running status (Frame type 0x41, and 0x42 are packed.)</p> <p>Sending : 0 byte</p> <p>Response : 33 bytes</p> <table><tr><td>1 byte</td><td>4 bytes</td><td>4 bytes</td><td>4 bytes</td></tr><tr><td>Communication status</td><td>Input value</td><td>status</td><td>Output status</td></tr><tr><td></td><td>value</td><td>value</td><td>value</td></tr></table> <table><tr><td>4 bytes</td><td>4 bytes</td><td>4 bytes</td><td>4 bytes</td><td>4 bytes</td></tr><tr><td>Command position value</td><td>Actual position value</td><td>Position Difference value</td><td>Running speed value</td><td>Current running PT number</td></tr></table>	1 byte	4 bytes	4 bytes	4 bytes	Communication status	Input value	status	Output status		value	value	value	4 bytes	4 bytes	4 bytes	4 bytes	4 bytes	Command position value	Actual position value	Position Difference value	Running speed value	Current running PT number
1 byte	4 bytes	4 bytes	4 bytes																					
Communication status	Input value	status	Output status																					
	value	value	value																					
4 bytes	4 bytes	4 bytes	4 bytes	4 bytes																				
Command position value	Actual position value	Position Difference value	Running speed value	Current running PT number																				
0x50 (80)	FAS_ SetCommandPos	<p>Ezi-SERVO Plus-R is the closed loop control drive and so the command position value is continuously controlled while the motor is in running. The user sets it to the command position value before it starts to operate and then can check how the command position value is changed.</p> <p>Sending : 4 bytes</p> <table><tr><td>4 bytes</td></tr><tr><td>Command position setting count value</td></tr></table> <p>Response : 1 byte</p> <table><tr><td>1 byte</td></tr><tr><td>Communication status</td></tr></table>	4 bytes	Command position setting count value	1 byte	Communication status																		
4 bytes																								
Command position setting count value																								
1 byte																								
Communication status																								
0x51 (81)	FAS_ GetCommandPos	<p>To request the command position value[pulse] being tracked.</p> <p>Sending : 0 byte</p> <p>Response : 5 bytes</p> <table><tr><td>1 byte</td><td>4 bytes</td></tr><tr><td>Communication status</td><td>Command position value</td></tr></table>	1 byte	4 bytes	Communication status	Command position value																		
1 byte	4 bytes																							
Communication status	Command position value																							
0x52 (82)	FAS_ SetActualPos	<p>Ezi-SERVO Plus-R is the closed loop control drive and so the actual position value is continuously controlled while the motor is in running. The user sets it to the actual position value before it starts to operate and then can check how the actual position value is changed.</p>																						

		<p>Sending : 4 bytes</p> <table><tr><td>4 bytes</td></tr><tr><td>Actual position count value</td></tr></table> <p>Response : 1 byte</p> <table><tr><td>1 byte</td></tr><tr><td>Communication status</td></tr></table>	4 bytes	Actual position count value	1 byte	Communication status
4 bytes						
Actual position count value						
1 byte						
Communication status						
0x53 (83)	FAS_ GetActualPos	<p>To request the current actual position value[pulse].</p> <p>Sending : 0 byte</p> <p>Response : 5 bytes</p> <table><tr><td>1 byte</td><td>4 bytes</td></tr><tr><td>Communication status</td><td>Actual position value</td></tr></table>	1 byte	4 bytes	Communication status	Actual position value
1 byte	4 bytes					
Communication status	Actual position value					
0x54 (84)	FAS_ GetPosError	<p>To request the difference[pulse] between the command position value and the actual position value.</p> <p>Sending : 0 byte</p> <p>Response : 5 bytes</p> <table><tr><td>1 byte</td><td>4 bytes</td></tr><tr><td>Communication status</td><td>Position difference value</td></tr></table> <p>By this value, the user can check the current running status (how much in position is tracked)..</p>	1 byte	4 bytes	Communication status	Position difference value
1 byte	4 bytes					
Communication status	Position difference value					
0x55 (85)	FAS_ GetActualVel	<p>To request the current running speed value [pps]</p> <p>Sending : 0 byte</p> <p>Response : 5 bytes</p> <table><tr><td>1 byte</td><td>4 bytes</td></tr><tr><td>Communication status</td><td>Speed value</td></tr></table>	1 byte	4 bytes	Communication status	Speed value
1 byte	4 bytes					
Communication status	Speed value					

0x56 (86)	FAS_ ClearPosition	<p>Ezi-SERVO Plus-R is the closed loop control drive and so the command position value is continuously controlled while the motor is in running. The user sets the command position and actual position value to '0' before it starts to operate and then can check how the command position value is changed.</p> <p>Sending : 0 byte</p> <p>Response : 1 byte</p> <table><tr><td>1 byte</td></tr><tr><td>Communication status</td></tr></table>	1 byte	Communication status				
1 byte								
Communication status								
0x58 (88)	FAS_ MovePause	<p>To request the pause start and pause end of motor motioning.</p> <p>Sending : 1 byte</p> <table><tr><td>1 byte</td></tr><tr><td>0:pause release, 1:pause start</td></tr></table> <p>Response : 1 byte</p> <table><tr><td>1 byte</td></tr><tr><td>Communication status</td></tr></table>	1 byte	0:pause release, 1:pause start	1 byte	Communication status		
1 byte								
0:pause release, 1:pause start								
1 byte								
Communication status								
0x60 (96)	FAS_ PosTableReadItem	<p>To read PT values in the RAM of the drive.</p> <p>(This function is not supported for Ezi-SERVO ALL-28.)</p> <p>Sending : 2 bytes</p> <table><tr><td>2 bytes</td></tr><tr><td>Readable PT number (0~255)</td></tr></table> <p>Response : 65 bytes</p> <table><tr><td>1 byte</td><td>64 bytes</td></tr><tr><td>Communication status</td><td>Relevant PT values</td></tr></table> <p>For items by each PT, refer to 「2-2-6. Position Table Item」.</p>	2 bytes	Readable PT number (0~255)	1 byte	64 bytes	Communication status	Relevant PT values
2 bytes								
Readable PT number (0~255)								
1 byte	64 bytes							
Communication status	Relevant PT values							
0x61 (97)	FAS_ PosTableWriteItem	<p>To save PT values to the RAM of the drive.</p> <p>(This function is not supported for Ezi-SERVO ALL-28.)</p>						

		<p>Sending : 66 bytes</p> <table><tr><td>2 bytes</td><td>64 bytes</td></tr><tr><td>PT number (0~255)</td><td>Relevant PT value</td></tr></table> <p>For items by each PT, refer to 「2-2-6. Position Table Item」 .</p> <p>Response : 2 bytes</p> <table><tr><td>1 byte</td><td>1 byte</td></tr><tr><td>Communication status</td><td>Command performing status (values except 0 : complete, 0: error)</td></tr></table>	2 bytes	64 bytes	PT number (0~255)	Relevant PT value	1 byte	1 byte	Communication status	Command performing status (values except 0 : complete, 0: error)
2 bytes	64 bytes									
PT number (0~255)	Relevant PT value									
1 byte	1 byte									
Communication status	Command performing status (values except 0 : complete, 0: error)									
0x62 (98)	FAS_ PosTableReadROM	<p>To read all PT values (256 ea) in the ROM of the drive (This function is not supported for Ezi-SERVO ALL-28.)</p> <p>Sending : 0 byte</p> <p>Response : 2 bytes</p> <table><tr><td>1 byte</td><td>1 byte</td></tr><tr><td>Communication status</td><td>Command performing status (0 : complete, values except 0: error)</td></tr></table>	1 byte	1 byte	Communication status	Command performing status (0 : complete, values except 0: error)				
1 byte	1 byte									
Communication status	Command performing status (0 : complete, values except 0: error)									
0x63 (99)	FAS_ PosTableWriteROM	<p>To save all PT value(256 ea) to the ROM of the drive. (This function is not supported for Ezi-SERVO ALL-28.)</p> <p>Sending : 0 byte</p> <p>Response : 2 bytes</p> <table><tr><td>1 byte</td><td>1 byte</td></tr><tr><td>Communication status</td><td>Command performing status (0 : complete, values except 0: error)</td></tr></table>	1 byte	1 byte	Communication status	Command performing status (0 : complete, values except 0: error)				
1 byte	1 byte									
Communication status	Command performing status (0 : complete, values except 0: error)									
0x64 (100)	FAS_ PosTableRunItem	<p>To start the position table operation from the designated PT number (This function is not supported for Ezi-SERVO ALL-28.)</p> <p>Sending : 2 bytes</p> <table><tr><td>2 bytes</td></tr><tr><td>PT Number (0~255)</td></tr></table>	2 bytes	PT Number (0~255)						
2 bytes										
PT Number (0~255)										

		<div>Response : 1 byte</div> <table><tr><td>1 byte</td></tr><tr><td>Communication status</td></tr></table>	1 byte	Communication status								
1 byte												
Communication status												
0x6A (106)	FAS_ PosTableReadOneItem	<div>To read one of PT values in the RAM of the drive. (This function is not supported for Ezi-SERVO ALL-28.)</div> <div>Sending: 4 byte</div> <table><tr><td>2 byte</td><td>2 byte</td></tr><tr><td>PT Number (0~255)</td><td>Offset value(0~56)</td></tr></table> <div>Refer to 「2-2-6. Position Table Item」 for Offset value</div> <div>Response: 5 byte</div> <table><tr><td>1 byte</td><td>4 byte</td></tr><tr><td>Communication status</td><td>Relevant one of PT value</td></tr></table>	2 byte	2 byte	PT Number (0~255)	Offset value(0~56)	1 byte	4 byte	Communication status	Relevant one of PT value		
2 byte	2 byte											
PT Number (0~255)	Offset value(0~56)											
1 byte	4 byte											
Communication status	Relevant one of PT value											
0x6B (107)	FAS_ PosTableWriteOneItem	<div>To save one of PT values to the RAM of the drive. (This function is not supported for Ezi-SERVO ALL-28.)</div> <div>Sending: 8 byte</div> <table><tr><td>2 byte</td><td>2 byte</td><td>4 byte</td></tr><tr><td>PT Number (0~255)</td><td>Offset value (0~56)</td><td>Relevant one of PT value</td></tr></table> <div>Refer to 「2-2-6. Position Table Item」 for Offset value</div> <div>Response: 2 byte</div> <table><tr><td>1 byte</td><td>1 byte</td></tr><tr><td>Communication status</td><td>Command performing status (values except 0 : complete, 0: error)</td></tr></table>	2 byte	2 byte	4 byte	PT Number (0~255)	Offset value (0~56)	Relevant one of PT value	1 byte	1 byte	Communication status	Command performing status (values except 0 : complete, 0: error)
2 byte	2 byte	4 byte										
PT Number (0~255)	Offset value (0~56)	Relevant one of PT value										
1 byte	1 byte											
Communication status	Command performing status (values except 0 : complete, 0: error)											
0x78 (120)	FAS_ MovePush	<div>To request push motion(maintain specified motor torque) command. (This function is not supported for Ezi-SERVO ALL-28.)</div> <div>Sending: 28 bytes</div> <table><tr><td>4 byte</td><td>4 bytes</td><td>4 byte</td><td>2 bytes</td><td>2 bytes</td></tr><tr><td>Normal Start speed</td><td>Normal Move speed</td><td>Normal Position</td><td>Accel time</td><td>Decel time</td></tr></table>	4 byte	4 bytes	4 byte	2 bytes	2 bytes	Normal Start speed	Normal Move speed	Normal Position	Accel time	Decel time
4 byte	4 bytes	4 byte	2 bytes	2 bytes								
Normal Start speed	Normal Move speed	Normal Position	Accel time	Decel time								

		<table><tr><td>2 byte</td><td>4 bytes</td><td>4 byte</td><td>2 byte</td></tr><tr><td>Push torque ratio</td><td>Push Move speed</td><td>Push Position</td><td>Push mode</td></tr></table> <p>Refer to 「User Manual Test 7-6. Push Motion」 .</p> <p>Response: 1 byte</p> <table><tr><td>1 byte</td></tr><tr><td>Communication status</td></tr></table>	2 byte	4 bytes	4 byte	2 byte	Push torque ratio	Push Move speed	Push Position	Push mode	1 byte	Communication status
2 byte	4 bytes	4 byte	2 byte									
Push torque ratio	Push Move speed	Push Position	Push mode									
1 byte												
Communication status												
0x79 (121)	FAS_ GetPushStatus	<p>To request the current push motion status.</p> <p>(This function is not supported for Ezi-SERVO ALL-28.)</p> <p>Sending: 0 byte</p> <p>Response: 2 byte</p> <table><tr><td>1 byte</td><td>1 bytes</td></tr><tr><td>Communication status</td><td>Push motion status (0: normal Servo ON 1: push motioning but the work is not detected 2: work detected and torque is maintained 3: work is not detect within push motion area)</td></tr></table>	1 byte	1 bytes	Communication status	Push motion status (0: normal Servo ON 1: push motioning but the work is not detected 2: work detected and torque is maintained 3: work is not detect within push motion area)						
1 byte	1 bytes											
Communication status	Push motion status (0: normal Servo ON 1: push motioning but the work is not detected 2: work detected and torque is maintained 3: work is not detect within push motion area)											

* Frame Type '0x65'~'0x69', '0x90'~'0x92' are allotted for internal use.

2.2.2 Parameter Lists

No	Name	Unit	Lower	Upper	Default
0	Pulse per Revolution		0	9	9
1	Axis Max Speed	[pps]	1	500,000	500,000
2	Axis Start Speed	[pps]	1	35,000	1
3	Axis Acc Time	[msec]	1	9,999	100
4	Axis Dec Time	[msec]	1	9,999	100
5	Speed Override	[%]	1	500	100
6	Jog Speed	[pps]	1	500,000	5,000
7	Jog Start Speed	[pps]	1	35,000	1
8	Jog Acc Dec Time	[msec]	1	9,999	100
9	Servo Alarm Logic		0	1	0
10	Servo On Logic		0	1	0
11	Servo Alarm Reset Logic		0	1	0
12	S/W Limit Plus Value *1	[pulse]	-134,217,727	+134,217,727	+134,217,727
13	S/W Limit Minus Value *1	[pulse]	-134,217,727	+134,217,727	-134,217,727
14	S/W Limit Stop Method		0	1	1
15	H/W Limit Stop Method		0	1	1
16	Limit Sensor Logic		0	1	0
17	Org Speed	[pps]	1	500,000	5,000
18	Org Search Speed	[pps]	1	500,000	1,000
19	Org Acc Dec Time	[msec]	1	9,999	50
20	Org Method		0	5	0
21	Org Dir		0	1	0
22	Org Offset *1	[pulse]	-134,217,727	+134,217,727	0
23	Org Position Set *1	[pulse]	-134,217,727	+134,217,727	0
24	Org Sensor Logic		0	1	0
25	Position Loop Gain		0	15	4
26	Inpos Value		0	15	0
27	Pos Tracking Limit *1	[pulse]	1	+134,217,727	5,000
28	Motion Dir		0	1	0
29	Limit Sensor Dir		0	1	0
30	Org Torque Ratio	[%]	20	90	50
31	Pos. Error Overflow Limit *1	[pulse]	1	+134,217,727	5,000
32	Pos.Value Counting Method		0	1	0
33	Servo ON Method		0	1	1
34	Brake Delay Time	[msec]	10	5000	400
35	Reserved				
36	Run Current	*10[%]	5	15	10
37	Stop Current	*10[%]	2	10	5
38	Boost Current	*50[%]	0	7	0

*1 Next value is used for bigger '06.0x.1xx.xx' Firmware version number.

(plus value is 2147483647 and minus value is -2147483647)

2.2.3 Bit setup of Output pin

This displays the detailed description for 0x20 Frame type.

This command is applicable only to 9 signals of 'User Output 0' ~ 'User Output 8' out of 24 signal types in the control output port. The rest (15 output signals) of them cannot be operated by the user's disposal. When any relevant situation occurs while the drive operates, they are displayed. The following table shows bit mask values by each signal.

Signal Name	Relevant Bit Position	Signal Name	Relevant Bit Position	Signal Name	Relevant Bit Position
Compare Out	0x00000001	Origin Search OK	0x00000100	User OUT 1	0x00010000
Inposition	0x00000002	ServoReady	0x00000200	User OUT 2	0x00020000
Alarm	0x00000004	reserved	0x00000400	User OUT 3	0x00040000
Moving	0x00000008	reserved	0x00000800	User OUT 4	0x00080000
Acc/Dec	0x00000010	PT Output0	0x00001000	User OUT 5	0x00100000
ACK	0x00000020	PT Output1	0x00002000	User OUT 6	0x00200000
END	0x00000040	PT Output2	0x00004000	User OUT 7	0x00400000
AlarmBlink	0x00000080	User OUT 0	0x00008000	User OUT 8	0x00800000

【Example 1】 Sending data to turn ON the User Output 5 port.

4 bytes (I/O set mask value)	4 bytes (I/O clear mask value)
0x00100000	0x00000000

【Example 2】 Sending data to turn OFF the User Output 5 port

4 bytes (I/O set mask value)	4 bytes (I/O clear mask value)
0x00000000	0x00100000

2.2.4 Bit setup of Input pin

This displays the detailed description for 0x21 Frame type.

This command is applicable to 32 signals in the control input port. The user can use signals for test as if they are inputted without actual input signal. The following table shows bit mask values by each signal.

Signal Name	Relevant Bit Position	Signal Name	Relevant Bit Position	Signal Name	Relevant Bit Position	Signal Name	Relevant Bit Position
Limit+	0x00000001	PT A4	0x00000100	AlarmReset	0x00010000	JPT input2	0x01000000
Limit-	0x00000002	PT A5/ User IN 6	0x00000200	ServoON	0x00020000	JPT Start	0x02000000
Origin	0x00000004	PT A6/ User IN 7	0x00000400	Pause	0x00040000	User IN 0	0x04000000
Clear Position	0x00000008	PT A7/ User IN 8	0x00000800	Org Search	0x00080000	User IN 1	0x08000000
PT A0	0x00000010	PT Start	0x00001000	Teaching	0x00100000	User IN 2	0x10000000
PT A1	0x00000020	Stop	0x00002000	E-stop	0x00200000	User IN 3	0x20000000
PT A2	0x00000040	Jog+	0x00004000	JPT input0	0x00400000	User IN 4	0x40000000
PT A3	0x00000080	Jog-	0x00008000	JPT input1	0x00800000	User IN 5	0x80000000

【Example 1】 Sending data to turn ON the Pause port

4 bytes (I/O set mask value)	4 bytes (I/O clear mask value)
0x00040000	0x00000000

【Example 2】 Sending data to turn OFF the Pause port

4 bytes (I/O set mask value)	4 bytes (I/O clear mask value)
0x00000000	0x00040000



Attention

- Do not mix the bit setup of 'PT A5~PT A7' and 'User IN6~IN8' together on your program.

2.2.5 Bit setup of Status Flag

Refer to 'motion_define.h' of include files.

Name of Flag Define	Contents	Relevant Bit Position
FFLAG_ERRORALL	One or more error occurs.	0X00000001
FFLAG_HWPOSILMT	'+' direction limit sensor turns ON.	0X00000002
FFLAG_HWNEGALMT	'-' direction limit sensor turns ON.	0X00000004
FFLAG_SWPOGILMT	'+' direction program limit is exceeded.	0X00000008
FFLAG_SWNEGALMT	'-' direction program limit is exceeded.	0X00000010
Reserved1		0X00000020
Reserved2		0X00000040
FFLAG_ERRPOSOVERFLOW	Position error is higher than 'Pos Error Overflow Limit'parameter after position command	0X00000080
FFLAG_ERROVERCURRENT	The motor driving device is under over-current.	0X00000100
FFLAG_ERROVERSPEED	The motor speed exceeded 3000[rpm].	0X00000200
FFLAG_ERRPOSTRACKING	Position error is higher than 'Pos Tracking Limit'parameter during position command run.	0X00000400
FFLAG_ERROVERLOAD	Load exceeding the max torque of the motor is loaded more than 5 seconds.	0X00000800
FFLAG_ERROVERHEAT	The internal temperature of the drive exceeds 55°C.	0X00001000
FFLAG_ERRBACKEMF	A counter electromotive force of the motor exceeds 70V.	0X00002000
FFLAG_ERRMOTORPOWER	The power supplied to the motor is less than low limited value.	0X00004000
FFLAG_ERRINPOSITION	After operation is finished, a position error occurs for more	0X00008000
FFLAG_EMGSTOP	The motor is under emergency stop.	0X00010000
FFLAG_SLOWSTOP	The motor is under general stop.	0X00020000
FFLAG_ORIGINRETURNING	The motor is returning to the origin.	0X00040000
FFLAG_INPOSITION	Inposition has been finished.	0X00080000
FFLAG_SERVOON	The motor is under Servo ON.	0X00100000
FFLAG_ALARMRESET	AlarmReset has run.	0X00200000
FFLAG_PTSTOPPED	Position Table operation has been finished.	0X00400000
FFLAG_ORIGINSENSOR	The origin sensor is ON.	0X00800000
FFLAG_ZPULSE	The motor is in the z-pulse position of encoder.	0X01000000
FFLAG_ORIGINRETOK	Origin return operation has been finished.	0X02000000
FFLAG_MOTIONDIR	To display the motor operating direction (+: Off, -: On)	0X04000000
FFLAG_MOTIONING	The motor is running.	0X08000000
FFLAG_MOTIONPAUSE	The motor in running is stopped by Pause command.	0X10000000
FFLAG_MOTIONACCEL	The motor is operating to the acceleration section.	0X20000000
FFLAG_MOTIONDECEL	The motor is operating to the deceleration section.	0X40000000
FFLAG_MOTIONCONST	The motor is operating to the normal speed, not acceleration / deceleration sections.	0X80000000

2.2.6 Position Table Item

Refer to 'motion_define.h' of include files.

Name	Name of Structure Parameter	Number of Bytes	Offset value	Unit	Low Limit *1	Upper Limit *1
Position	lPosition	4 (signed)	0	[pulse]	-134217728	+134217728
Low Speed	dwStartSpd	4 (unsigned)	4	[pps]	0	500000
High Speed	dwMoveSpd	4 (unsigned)	8	[pps]	0	500000
Accel. Time	wAccelRate	2 (unsigned)	12	[msec]	1	9999
Decel. Tme	wDecelRate	2 (unsigned)	14	[msec]	1	9999
Command	wCommand	2 (unsigned)	16		0	10
Wait time	wWaitTime	2 (unsigned)	18	[msec]	0	600000
Blank		2 (unsigned)				
Jump Table No.	wBranch	2 (unsigned)	22		0 10000	255 10255
Jump PT 0	wCond_branch0	2 (unsigned)	24		0 10000	255 10255
Jump PT 1	wCond_branch1	2 (unsigned)	26		0 10000	255 10255
Jump PT 2	wCond_branch2	2 (unsigned)	28		0 10000	255 10255
Loop Count	wLoopCount	2 (unsigned)	30		0	100
Loop Jump Table No.	wBranchAfterLoop	2 (unsigned)	32		0 10000	255 10255
PT set	wPTSet	2 (unsigned)	34		0	15
Loop Counter Clear	wLoopCountCLR	2 (unsigned)	36		0	255
Check Inposition	bCheckInpos	2 (unsigned)	38		0	1
Compare Position	lTriggerPos	4 (signed)	40	[pulse]	-134217728	+134217728
Compare Width	wTriggerOnTime	2 (unsigned)	44	[msec]	1	9999
Push Ratio	wPushRatio	2 (unsigned)	46	[%]	20	90
Push Speed	dwPushSpeed	4 (unsigned)	48	[pps]	0	33333
Push Position	lPushPosition	4 (signed)	52	[pulse]	-134217728	+134217728
Push Mode	wPushMode	2 (unsigned)	56		0	10000
Blank		6 (unsigned)	58	0x00		

*1 : The unit of [pps] in this item is referenced to 10,000[ppr] encoder.

For the setting method by each item, refer to other manual 「[User Manual_Position Table](#)」.

2.3 Program Method

There are 2 method of programming for Ezi-SERVO Plus-R.

The first is normally used method that using Visual C++ language under window system of PC. Library that serviced together with Ezi-SERVO Plus-R have to be used. Refer to 「[3. Library for PC Program](#)」

The second method can be accomplished by sending command characters directly to Ezi-SERVO Plus-R. The user have to prepare low level protocol programming like 'Protocol Test' program. This method is normally used for PLC system.

For excise the protocol programming, 'ProtocolTest_PlusR.exe' GUI program is serviced together. Refer to 「[4. Protocol for PLC Program](#)」 .

3. Library for PC Program

3.1 Library Configuration

To use this library, C++ header file(*.h) and library file(*.lib or *.dll) are required. These files are included in "[\\FASTECH\\Ezi-MOTION Plus-R V6\\include\\](#)". The following contents should be included in a source file for development. (It is standard for Ezi-SERVO Plus-R)

```
#include "\\FASTECH\\Ezi-MOTION Plus-R V6\\include\\FAS\_EziMotionPlusR.h"
#include "\\FASTECH\\Ezi-MOTION Plus-R V6\\include\\ReturnCodes\_Define.h"
#include "\\FASTECH\\Ezi-MOTION Plus-R V6\\include\\MOTION\_DEFINE.h"
#include "\\FASTECH\\Ezi-MOTION Plus-R V6\\include\\COMM\_Define.h"
```

Also, library files are as follows:

```
"\\FASTECH\\Ezi-MOTION Plus-R V6\\include\\EziMotionPlusR.lib"
"\\FASTECH\\Ezi-MOTION Plus-R V6\\include\\EziMotionPlusR.dll"
```

A sample program source of using library is included in a

["\\FASTECH\\Ezi-MOTION Plus-R V6\\Example\\"](#) folder.

(1) The following table describes values returned when each library(DLL) function is used. The user can check the values returned at the library(DLL) function. In case of low-level programming, this service not provided.

Item	Definition	Returned Value	Description
Normal	FMM_OK	0	The function has normally performed the command.
Input Error	FMM_NOT_OPEN	1	Wrong port number is inputted.
	FMM_INVALID_PORT_NUM	2	The port that is not connected.
	FMM_INVALID_SLAVE_NUM	3	Wrong slave number is inputted.
Operation Error	FMM_POSTABLE_ERROR	9	An error occurs while the motor accesses to the position table.
Connection Error	FMC_DISCONNECTED	5	The relevant drive is disconnected.
	FMC_TIMEOUT_ERROR	6	Response delay(100 msec) occurs.
	FMC_CRCFAILED_ERROR	7	Checksum error occurs.
	FMC_RECVPACKET_ERROR	8	Protocol level error occurs in packet that comes from Drive.

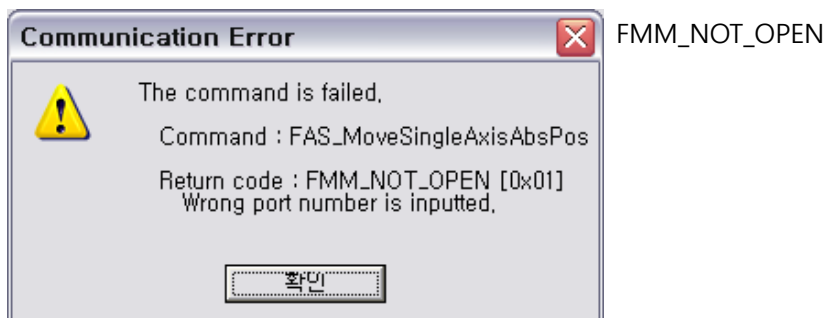
(2) The following table shows return values included commonly in all libraries. The user can check the result (communication status, running status) judged by the drive. When the user develops programs by using protocols without libraries(DLL), they are available as well.

Item	Description	Returned Value	Description
Normal	FMP_OK	0	Communication has been normally performed.
Input Error	FMP_FRAMETYPEERROR	128	The drive cannot recognize the command.
	FMP_DATAERROR	129	Input data is out of the range.
Operation Error	FMP_RUNFAIL	133	The motor is already running or not prepared for running. Other wrong motion command.
	FMP_RESETFAIL	134	The user cannot execute AlarmReset command while the servo is ON.
	FMP_SERVOONFAIL1	135	An alarm has occurred.
	FMP_SERVOONFAIL2	136	The motor is under Emergency Stop.
	FMP_SERVOONFAIL3	137	'ServoON' signal is already assigned to input pin.
	FMP_SERVOOFFFAIL	138	The motor is under Servo ON process.
Connection Error	FMP_PACKETERROR	130	Protocol level error occurs in packet that Drive's received.
	FMP_PACKETCRCERROR	170	CRC value is not correct in packet that Drive's received.

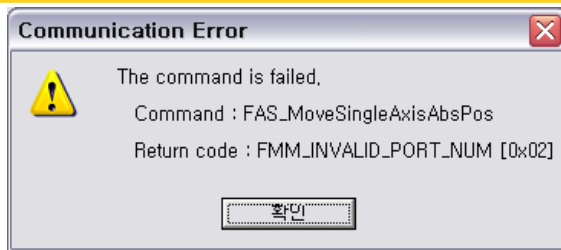
3.2 Communication Status Window

Above communication status is divide by 3 groups.

1) Communication Error

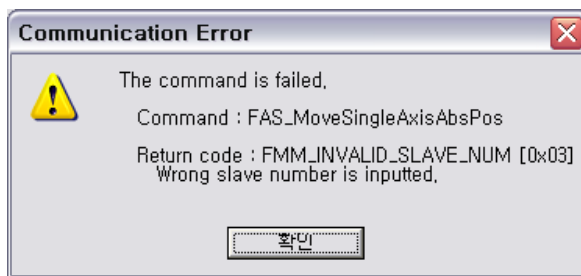


COM Port is not connected.



FMM_INVALID_PORT_NUM,

COM Port number is not exist. Checking the 'Device Manager' window in Window OS.



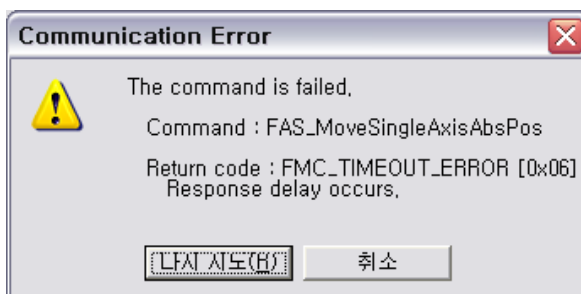
FMM_INVALID_SLAVE_NUM

Slave number is not exist. Checking the ID value of the drive.



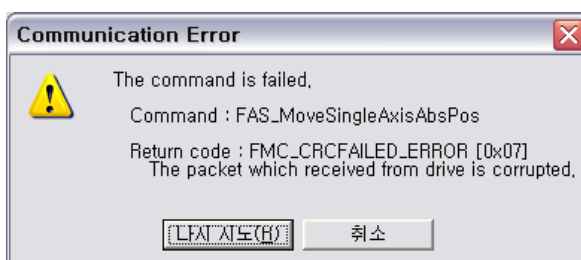
FMC_DISCONNECTED = 5

COM Port is disconnect during communication. Checking the communication cable or Power of the drive.



FMC_TIMEOUT_ERROR

There is no response from the drive.



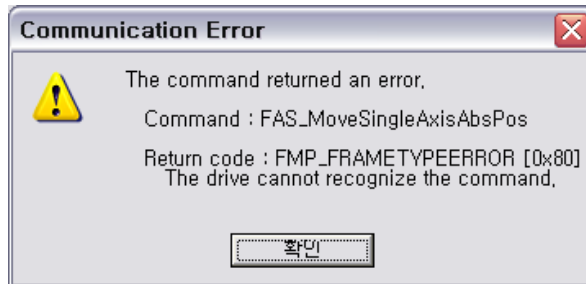
FMC_CRCFAILED_ERROR

CRC value of communication packet from the drive is not correct. Checking the possibility of noise on communication cable.



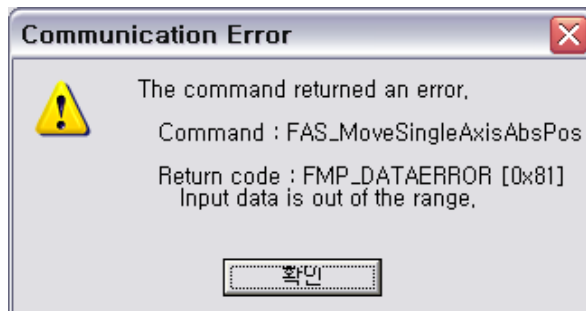
FMC_RECVPACKET_ERROR

The length of received packet is not correct. Checking the possibility of noise on communication cable.



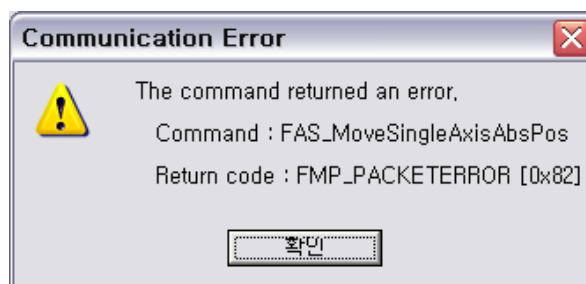
FMP_FRAMETYPEERROR = 0x80

Drive do not recognize the command or wrong command is send. Checking the command value that you want to send to the drive.



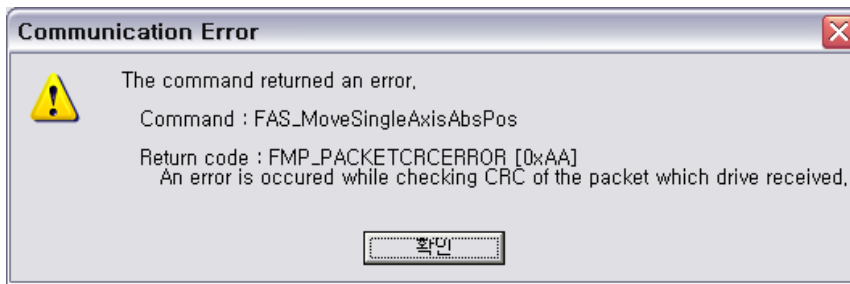
FMP_DATAERROR

The value of the send data is out of the proper range for drive. Checking the value that you want to send to the drive.



FMP_PACKETERROR

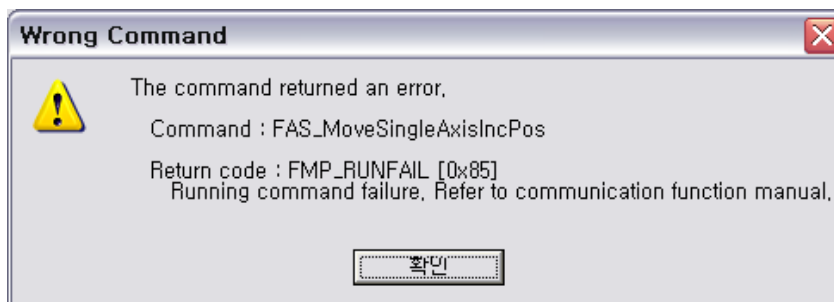
The length of received packet on drive is not correct. Checking the possibility of noise on communication cable.



FMP_PACKETCRCERROR = 0xAA,

The CRC value on drive is not correct. Checking the possibility of noise on communication cable.

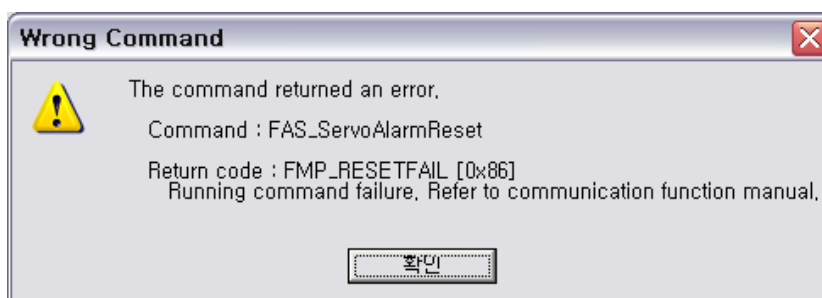
2) Wrong Command



FMP_RUNFAIL = 0x85,

Fail on motion command : The motor can not run on next status.

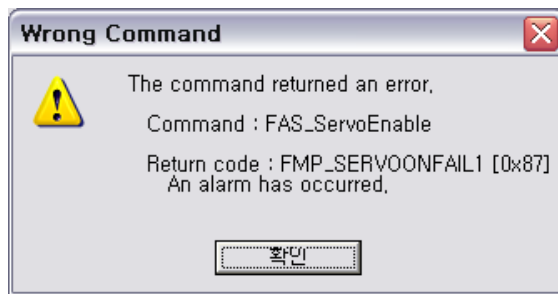
- The motor is already running
- The motor is under stop command
- Servo OFF status
- Try to Z-pulse Origin without external encoder (only for Ezi-STEP)
- other wrong motion command



FMP_RESETFAIL

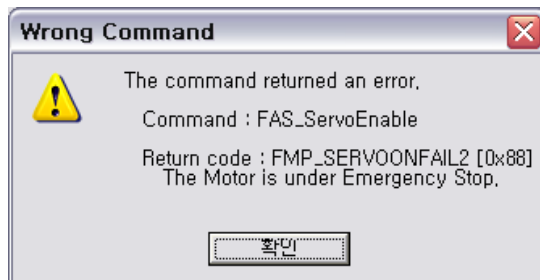
Fail on reset command : The motor can not reset on next status.

- Servo ON status
- Already 'Reset' status by external input signal.



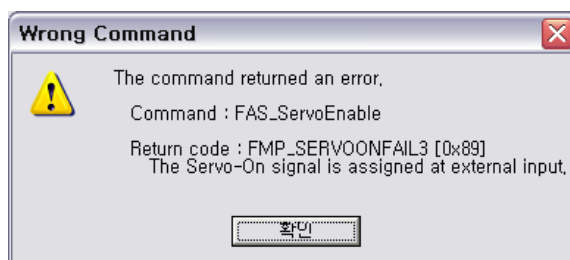
FMP_SERVOONFAIL1

Wrong 'Servo ON' command during Alarm happens.



FMP_SERVOONFAIL2

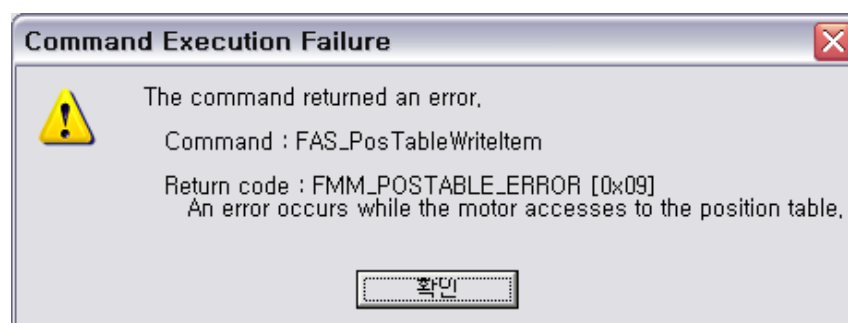
Wrong 'Servo ON' command during E-Stop happens.



FMP_SERVOONFAIL3

'Servo ON' Signal is assigned by external input pin. In this case Servo ON command by DLL library is not working.

3) Command Execution Error



FMM_POSTABLE_ERROR

The execution of DLL library for 'Position Table' is failed.

3.3 Drive Link Function

Function Name	Description
FAS_Connect	The drive tries to connect communication with the drive module: When it is successfully connected, TRUE will return. Otherwise, FALSE will return. (FAS_OpenPort + FAS_AttachSlave)
FAS_Close	The drive tries to disconnect communication with the drive module.
FAS_GetSlaveInfo	The drive reads drive type and program version: Drive type and version information will return.
FAS_GetMotorInfo	The drive reads motor type and maker: Motor type and maker information will return.
FAS_IsSlaveExist	The drive checks(with FAS_Connect) whether there is the relevant drive : When it exists, TRUE will return. Otherwise, FALSE will return.
FAS_EnableLog	To select the communication error log function ON/OFF : When it exists, TRUE will return. Otherwise, FALSE will return.
FAS_SetLogPath	To set the saved folder name of error log file : When folder exists, TRUE will return. Otherwise, FALSE will return.
FAS_SetLogLevel	To set the level of Alarm log.
FAS_PrintCustomLog	To add temporary message for log file that is made by library.

Above function library is the normal usage one, and the next is the additional function library.

- 1) **FAS_OpenPort** and **FAS_AttachSlave** : This function is divided from 'FAS_Connect' library. **FAS_OpenPort()** is only for Port connection function in 'FAS_Connect()' function, **FAS_AttachSlave()** is connecting Slave in that Port. **FAS_Connect()** is firstly execute **FAS_OpenPort()** and then execute **FAS_AttachSlave()** for **iSlaveNo** (0~15).
- 2) **FAS_GetSlaveInfoEx** : This function is similar to **FAS_GetSlaveInfo()** function. **FAS_GetSlaveInfo()** function can get the type of drive and the version information(strings), but **FAS_GetSlaveInfoEx()** function can get much more informations of **DRIVE_INFO** structure.

FAS_Connect

FAS_Connect is the function of connecting Ezi-SERVO Plus-R drive.

Syntax

```
BOOL FAS_Connect(
    BYTE nPortNo,
    DWORD dwBaud
);
```

Parameters

nPortNo

Select a serial port to be connected.

dwBaud

Input the Baudrate of the serial port.

Return Value

When it is successfully connected, TRUE will return. Otherwise, FALSE will return.

Remarks

Example

```
#include "FAS_EziMOTIONPlusR.h"

void funcInit()
{
    BYTE nPortNo = 1; // COMM Port Number
    DWORD dwBaudrate = 115200; // Baudrate. (Be variable by setting)
    BYTE iSlaveNo = 0; // Slave No (0 ~ 15)
    char lpBuff[256];
    int nBuffSize = 256;
    BYTE nType;
    int nRtn;

    // Try to connect
    if (FAS_Connect(nPortNo, dwBaudrate) == FALSE)
    {
        // Connection failed.
        // The port is not connected or the baudrate may be wrong.
        return;
    }

    if (FAS_IsSlaveExist(nPortNo, iSlaveNo) == FALSE)
    {
```

```
        // There is no relevant slave number.
        // Check the slave number of Ezi-SERVO Plus-R.
        return;
    }

    nRtn = FAS_GetSlaveInfo(nPortNo, iSlaveNo, &nType, lpBuff, nBuffSize);
    if (nRtn != FMM_OK)
    {
        // Command has not been performed properly.
        // Refer to ReturnCodes_Define.h.
    }

    printf("Port : %d (Slave %d) \n", nPortNo, iSlaveNo);
    printf("\tType : %d \n", nType);
    printf("\tVersion : %d \n", lpBuff);

    // Disconnect.
    FAS_Close(nPortNo);
}
```

See Also

FAS_Close

FAS_OpenPort

Open the Serial Port.

Syntax

```
void FAS_OpenPort(
    BYTE nPortNo, DWORD dwBaud
);
```

Parameters

nPortNo
Select a serial port to be connected.

dwBaud
Input the Baudrate of the serial port.

Return Value

When it is successfully opened the serial port, TRUE will returns. Otherwise, FALSE will return.

Remarks

Example

```
#include "FAS_EziMOTIONPlusR.h"

void funcInit()
{
    BYTE nPortNo = 1; // COMM Port number
    DWORD dwBaudrate = 115200; // Baudrate value .
    BYTE iFistSlaveNo = 3;
    BYTE iSecondSlaveNo = 7;

    // connect
    if (FAS_OpenPort(nPortNo, dwBaudrate) == FALSE)
    {
        // Fail on Port Open. Check the Port number.
        return;
    }

    if (FAS_AttachSlave(nPortNo, iFirstSlave) == FALSE)
    {
        // Not connected for first Salve.
        // Check the power for drive or cable.
        return;
    }

    if (FAS_AttachSlave(nPortNo, iSecondSlave) == FALSE)
    {
        // Not connected for second Salve.
        // Check the power for drive or cable.
        return;
    }
}
```

```
}  
  
// Connection is success for 2 drives.  
  
// Finish the connection  
FAS_Close(nPortNo);  
}
```

See Also

FAS_AttachSlave

FAS_AttachSlave

Connect to drive of 'SlaveNo' that is defines from serial port of FAS_OpenPort.

Syntax

```
void FAS_AttachSlave(  
    BYTE nPortNo, BYTE iSlaveNo  
);
```

Parameters

nPortNo
Select a serial port to be connected.

iSlaveNo
Drive number that will be connect.

Return Value

When the drive of 'iSalveNo' is searched from Serial Port, it will return TRUE.

If the Serail Port is not Open status or the drive of 'iSlaveNo' can not be searched, it will return FALSE.

See Also

FAS_OpenPort

FAS_Close

To disconnect the serial port being used.

Syntax

```
void FAS_Close(  
    BYTE nPortNo  
);
```

Parameters

nPortNo
Port number to disconnect

Remarks

Example

Refer to 'FAS_Connect' library.

See Also

FAS_Connect

FAS_GetSlaveInfo

To get the version information string of the relevant drive.

Syntax

```
int FAS_GetSlaveInfo(  
    BYTE nPortNo,  
    BYTE iSlaveNo,  
    BYTE pType,  
    LPSTR lpBuff,  
    int nBuffSize  
);
```

Parameters

nPortNo
Port number of relevant drive

iSlaveNo
Slave number of relevant drive

pType
Relevant drive type number

lpBuff
Buffer pointer to get version information string

nBuffSize
lpBuff memory allocation size

Return Value

FMM_OK : Command has been normally performed.

FMM_NOT_OPEN : The drive has not been connected yet.

FMM_INVALID_PORT_NUM : There is no nPort in the connected ports.

FMM_INVALID_SLAVE_NUM : There is no drive of iSlaveNo in the relevant port.

Remarks

Example

Refer to 'FAS_Connect' library.

See Also

FAS_GetMotorInfo

To get the motor information string of the relevant drive.

Syntax

```
int FAS_GetMotorInfo(  
    BYTE nPortNo,  
    BYTE iSlaveNo,  
    BYTE pType,  
    LPSTR lpBuff,  
    int nBuffSize  
);
```

Parameters

nPortNo
Port number of relevant drive

iSlaveNo
Slave number of relevant drive

pType
Relevant motor type number

lpBuff
Buffer pointer to get version information string

nBuffSize
lpBuff memory allocation size

Return Value

FMM_OK : Command has been normally performed.

FMM_NOT_OPEN : The drive has not been connected yet.

FMM_INVALID_PORT_NUM : There is no nPort in the connected ports.

FMM_INVALID_SLAVE_NUM : There is no drive of iSlaveNo in the relevant port.

Remarks

Example

Refer to 'FAS_Connect' library.

See Also

FAS_IsSlaveExist

To check that the drive is connected.

Syntax

```
BOOL FAS_IsSlaveExist(  
    BYTE nPortNo,  
    BYTE iSlaveNo  
);
```

Parameters

nPortNo
Port number of relevant drive

iSlaveNo
Slave number of relevant drive

Return Value

TRUE : The drive is connected.
FALSE : The drive is disconnected.

Remarks

This function is provided from the library only and it is inapplicable to the protocol program mode.

Example

Refer to 'FAS_Connect' library.

See Also

FAS_Connect

FAS_EnableLog

To select the save function of communication error log file.

Syntax

```
void FAS_EnableLog(BOOL bEnable);
```

Parameters

bEnable
Select output of Log.

Remarks

Select the Log output during Ezi-MOITON Plus-R DLL function used. This setup
Do not effect th other process or other program.
Log function start from 'FAS_Connect' function, the Log output is end when the
'FAS_Close' is excuted.

Example

```
#include "FAS_ EziMOTIONPlusR.h"

void funcDisableLog()
{
    BYTE nPortNo = 1;

    FAS_EnableLog(FALSE);

    // Try to connect.
    if (FAS_Connect(nPortNo, 115200) == FALSE)
    {
        // connection fail.
        // cab be different Port or different Baudrate.
        return;
    }

    // Connection close..
    FAS_Close(nPortNo);
}
```

See Also

FAS_SetLogPath

FAS_SetLogPath

Setup the folder path of Log output files.

Syntax

```
BOOL FAS_SetLogPath(LPCTSTR lpPath);
```

Parameters

lpPath

Folder path Character string of Log output file.

Return Value

If the folder name is not exist or can not access, return FALSE.

Remarks

This function have to be called before FAS_Connect library.

If the lpPath value is NULL or the length is 0, the Log path is selected to Ezi-MOTION Plus-R Library folder. The default value for Log path is NULL that the current library and program exist folder.

Example

```
#include "FAS_ EziMOTIONPlusR.h"

void funcEnableLog()
{
    BYTE nPortNo = 1; // COMM Port number

    // Log output.
    FAS_EnableLog(TRUE);

    if (!FAS_SetLogPath(_T("C:\\Logs\\"))) // C:\\Logs folder exist.
    {
        // Log path does not exist.
        Return;
    }

    // All Log output is stored in C:\\Logs folder.

    // Try to connect.
    if (FAS_Connect(nPortNo, 115200) == FALSE)
    {
        // Connection fail.
        // cab be different Port or different Baudrate.
        return;
    }
}
```

```
        // Close connect.  
        FAS_Close(nPortNo);  
    }
```

See Also

FAS_EnableLog

FAS_SetLogLevel

FAS_SetLogLevel is used for set the level of Log that is made by EziMOTIONPlusR.dll library.

Syntax

```
void FAS_SetLogLevel(
    enum LOG_LEVEL level
);
```

Parameters

level
Set Level of Log.

Remarks

Here is the list of level type.

LOG_LEVEL_COMM : only the communication error can be Log(default).

LOG_LEVEL_PARAM : communication error and the used parameter setting function can be Log.

LOG_LEVEL_MOTION : communication error , the used parameter setting function and used motion function can be Log.

LOG_LEVEL_ALL : communication error and the all used function library can be Log.

Example

```
#include "FAS_ EziMOTIONPlusR.h"

void funcInit()
{
    BYTE nPortNo = 1;        // COMM Port value
    DWORD dwBaudrate = 115200;    // Baudrate value.
    BYTE iSlaveNo = 0;        // Slave No (0 ~ 15)
    char lpBuff[256];
    int nBuffSize = 256;
    BYTE nType;
    int nRtn;

    FAS_SetLogLevel(LOG_LEVEL_MOTION);

    if (FAS_Connect(nPortNo, dwBaudrate) == FALSE)
    {
        // Fail to connect.
        return;
    }
```



```
FAS_PrintCustomLog(nPortNo, LOG_LEVEL_COMM, _T("Program started.));  
FAS_PrintCustomLog(nPortNo, LOG_LEVEL_ALL, _T("Log is not printed.));  
  
// Close connection. Log file is close for Port.  
FAS_Close(nPortNo);  
}
```

See Also

FAS_Close

FAS_PrintCustomLog

FAS_PrintCustomLog can add temporary message to Log file.

Syntax

```
void FAS_PrintCustomLog(  
    BYTE nPortNo,  
    enum LOG_LEVEL level,  
    LPCTSTR lpszMsg  
);
```

Parameters

nPortNo

Log file is made for each Port. Select Port number for Log file.

level

Select level of message.

lpszMsg

Input the message strings.

Remarks

If the current Log level is same or lower, the message is logged to Log file of that Port.

Example

Refer to FAS_SetLogLevel.

See Also

FAS_SetLogLevel

3.4 Parameter Control Function

Function Name	Description
FAS_SaveAllParameters	Current parameters are saved to the ROM: Even after the drive is powered OFF, parameters related to operating speed, acceleration/deceleration time, and origin return need to be preserved.
FAS_SetParameter	The designated parameter is saved to the RAM: Specific parameter is saved.
FAS_GetParameter	The designated parameter is read from the RAM: Specific parameter is read.
FAS_GetROMParameter	The designated parameter is read from the ROM: Specific parameter is read from the ROM.

FAS_SaveAllParameters

All parameters edited up to now & assign status of In/Out signals are saved in the ROM area.

Syntax

```
Int FAS_SaveAllParameters(
    BYTE nPortNo,
    BYTE iSlaveNo
);
```

Parameters

nPortNo
Port number of relevant drive

iSlaveNo
Slave number of relevant drive

Return Value

FMM_OK : Command has been normally performed.
 FMM_NOT_OPEN : The drive has not been connected yet.
 FMM_INVALID_PORT_NUM : There is no nPort in the connected ports.
 FMM_INVALID_SLAVE_NUM : There is no drive of iSlaveNo in the relevant port.

Remarks

Parameter values set to 'FAS_SetIOAssignMap' library as well as current parameter values are saved to the ROM.

Example

```
#include "FAS_EziMOTIONPlusR.h"

void funcModifyParameter()
{
    BYTE nPortNo = 1; // COMM Port Number
    BYTE iSlaveNo = 0; // Slave No (0 ~ 15)
    long IParamVal;
    int nRtn;

    // Try to connect
    if (FAS_Connect(nPortNo, 115200) == FALSE)
    {
        // Connection failed.
        // The port is not connected or the baudrate may be wrong.
        return;
    }
}
```

```

// Check Axis Start Speed Parameter.
nRtn = FAS_GetParameter(nPortNo, iSlaveNo, SERVO_AXISSTARTSPEED, &IParmVal);
if (nRtn != FMM_OK)
{
    // Command has not been performed properly.
    // Refer to ReturnCodes_Define.h.
    _ASSERT(FALSE);
}
else
{
    // Parameter value saved in Ezi-SERVO Plus-R.
    printf("Parameter [before] : Start Speed = %d \n", IParmVal);
}

// Change Axis Start Speed parameter as 200 then read it again.
nRtn = FAS_SetParameter(nPortNo, iSlaveNo, SERVO_AXISSTARTSPEED, 200);
_ASSERT(nRtn == FMM_OK);          // You have to check if the command didn't execute correctly.

nRtn = FAS_GetParameter(nPortNo, iSlaveNo, SERVO_AXISSTARTSPEED, &IParmVal);
_ASSERT(nRtn == FMM_OK);
printf("Parameter [after] : Start Speed = %d \n", IParmVal);

// Check the value saved in the ROM.
nRtn = FAS_GetROMParameter(nPortNo, iSlaveNo, SERVO_AXISSTARTSPEED, &IParmVal);
_ASSERT(nRtn == FMM_OK);          // You have to check if the command didn't execute correctly.
printf("Parameter [ROM] : Start Speed = %d \n", IParmVal);

// Edit the parameter value then save it in the ROM.
nRtn = FAS_SetParameter(nPortNo, iSlaveNo, SERVO_AXISSTARTSPEED, 100);
_ASSERT(nRtn == FMM_OK);          // You have to check if the command didn't execute correctly.

nRtn = FAS_SaveAllParameters(nPortNo, iSlaveNo);
_ASSERT(nRtn == FMM_OK);

// Disconnect.
FAS_Close(nPortNo);
}

```

See Also

FAS_GetRomParameter

FAS_SetParameter

Edit the relevant parameter value and then save it to the RAM.

Syntax

```
int FAS_SetParameter(  
    BYTE nPortNo,  
    BYTE iSlaveNo,  
    BYTE iParamNo,  
    long IParamValue  
);
```

Parameters

nPortNo
Port number of relevant drive

iSlaveNo
Slave number of relevant drive

iParamNo
Parameter number to be edited

IParamValue
Parameter value to be edited

Return Value

FMM_OK : Command has been normally performed.

FMM_NOT_OPEN : The drive has not been connected yet.

FMM_INVALID_PORT_NUM : There is no nPort in the connected ports.

FMM_INVALID_SLAVE_NUM : There is no drive of iSlaveNo in the relevant port.

FMM_INVALID_PARAMETER_NUM : There is no parameter of designated iParamNo.

Remarks

The function operates only for one parameter designated.

Parameters in the drive are saved to 2 memory areas. That is, when power is off, the ROM saves parameters permanently. When power is on, parameters in the ROM are copied to the DSP RAM and used. When the user changes parameters, it changes not parameters in the ROM but parameter in the RAM. This function is to set the parameter number designated from the RAM to the relevant value.

Example

Refer to 'FAS_SaveAllParameter' library.

See Also

FAS_GetParameter

FAS_GetParameter

To call specific parameter values of the drive.

Syntax

```
int FAS_GetParameter(
    BYTE nPortNo,
    BYTE iSlaveNo,
    BYTE iParamNo,
    long* IParmValue
);
```

Parameters

nPortNo
Port number of relevant drive

iSlaveNo
Slave number of relevant drive

iParamNo
Parameter number to be imported

IParmValue
Parameter values

Return Value

FMM_OK : Command has been normally performed.

FMM_NOT_OPEN : The drive has not been connected yet.

FMM_INVALID_PORT_NUM : There is no nPort in the connected ports.

FMM_INVALID_SLAVE_NUM : There is no drive of iSlaveNo in the relevant port.

FMM_INVALID_PARAMETER_NUM : There is no parameter of designated iParamNo.

Remarks

The function operates only for one parameter designated.

Parameters in the drive are saved to 2 memory areas. That is, when power is off, the ROM saves parameters permanently. When power is on, parameters in the ROM are copied to the DSP RAM and used. When the user changes parameters, it changes not parameters in the ROM but parameter in the RAM. This function reads the parameter number designated to the RAM.

Example

Refer to 'FAS_SaveAllParameter' library.

See Also

FAS_SetParameter

FAS_GetROMParameter

To call parameters saved in the ROM

Syntax

```
int FAS_GetROMParameter(  
    BYTE nPortNo,  
    BYTE iSlaveNo,  
    BYTE iParamNo,  
    long* IRomParam  
);
```

Parameters

nPortNo
Port number of relevant drive

iSlaveNo
Slave number of relevant drive

iParamNo
Parameter number to be imported

IRomParam
Parameter values saved in the ROM

Return Value

FMM_OK : Command has been normally performed.

FMM_NOT_OPEN : The drive has not been connected yet.

FMM_INVALID_PORT_NUM : There is no nPort in the connected ports.

FMM_INVALID_SLAVE_NUM : There is no drive of iSlaveNo in the relevant port.

FMM_INVALID_PARAMETER_NUM : There is no parameter of designated iParamNo.

Remarks

To call parameter values saved in the ROM.

Even though this function runs, the value in the RAM is not changed. For this, run FAS_SetParameter.

Example

Refer to 'FAS_SaveAllParameter' library.

See Also

FAS_SaveAllParameters

3.5 Servo Control Function

Function Name	Description
FAS_ServoEnable	The Servo of the drive designated turns ON/OFF.
FAS_ServoAlarmReset	The drive which an alarm occurs is released: Troubleshoot the alarm cause and use this function.
FAS_GetAlarmType	Read the Alarm type of the drive.

Above function library is the normal usage one, and the next is the additional function library.

1) **FAS_GetAlarmLogs** and **FAS_ResetAlarmLogs** : This function is for read the alarm log of drive and initialize the log data. (only work on Servo OFF status)

FAS_ServoEnable

To turn ON/OFF the drive servo.

Syntax

```
int FAS_ServoEnable(
    BYTE nPortNo,
    BYTE iSlaveNo,
    BOOL bOnOff
);
```

Parameters

nPortNo
Port number of relevant drive

iSlaveNo
Slave number of relevant

bOnOff
Enable or Disable.

Return Value

FMM_OK : Command has been normally performed.

FMM_NOT_OPEN : The drive has not been connected yet.

FMM_INVALID_PORT_NUM : There is no nPort in the connected ports.

FMM_INVALID_SLAVE_NUM : There is no drive of iSlaveNo in the relevant port.

Remarks

The given time is required until Servo ON flag in the axis status turns on after enable.

Example

```
#include "FAS_ EziMOTIONPlusR.h"

void funcAxisStatus()
{
    BYTE nPortNo = 1; // COMM Port Number
    BYTE iSlaveNo = 0; // Slave No (0 ~ 15)
    EZISERVO_AXISSTATUS AxisStatus;
    int nRtn;

    // Try to connect
    if (FAS_Connect(nPortNo, 115200) == FALSE)
    {
        // Connection failed.
        // The port is not connected or the baudrate may be wrong.
        return;
    }
}
```

```

nRtn = FAS_GetAxisStatus(nPortNo, iSlaveNo, &(AxisStatus.dwValue));
_ASSERT(nRtn == FMM_OK);

// If SERVO_ON flag turns off, the servo turns on..
if (AxisStatus.FFLAG_SERVOON == 0)
{
    nRtn = FAS_ServoEnable(nPortNo, iSlaveNo, TRUE);
    _ASSERT(nRtn == FMM_OK);
}

// If there is an alarm, AlarmReset runs.
if (AxisStatus.FFLAG_ERRORALL || AxisStatus.FFLAG_ERROVERCURRENT ||
AxisStatus.FFLAG_ERROVERLOAD)
{
    nRtn = FAS_ServoAlarmReset(nPortNo, iSlaveNo);
    _ASSERT(nRtn == FMM_OK);
}

// Disconnect.
FAS_Close(nPortNo);
}

```

See Also

FAS_ServoAlarmReset

FAS_ServoAlarmReset

To send AlarmReset command.

Syntax

```
int FAS_ServoAlarmReset(  
    BYTE nPortNo,  
    BYTE iSlaveNo  
);
```

Parameters

nPortNo
Port number of relevant drive

iSlaveNo
Slave number of relevant drive

Return Value

FMM_OK : Command has been normally performed.
FMM_NOT_OPEN : The drive has not been connected yet.
FMM_INVALID_PORT_NUM : There is no nPort in the connected ports.
FMM_INVALID_SLAVE_NUM : There is no drive of iSlaveNo in the relevant port.

Remarks

Before sending this command, troubleshoot the alarm cause.
For alarm cause, refer to 'User Manual_Text'.

Example

Refer to 'FAS_ServoEnable' library

See Also

FAS_ServoEnable

3.6 Control I/O Function

Function Name	Description
FAS_SetIOInput	To set the input signal level of the control input port : Input signal is set to [ON] or [OFF].
FAS_GetIOInput	To read the current input signal status of the control input port : The signal status returns by bit for each input signal.
FAS_SetIOOutput	To set the output signal level of the control output port : Output signal is set to [ON] or [OFF].
FAS_GetIOOutput	To read the current output signal status of the control output port : The signal status returns by bit for each output signal.
FAS_GetIOAssignMap	To read the pin setting status of the CN1 port : The setting status for each 9 variable signals returns by bit to the Input and Output port.
FAS_SetIOAssignMap	To assign the control I/O signal to CN1 port pin and also set the signal level : Setting for each 9 variable signals is assigned to the Input and Output port.
FAS_IOAssignMapReadROM	To load the pin setting status of CN1 port from ROM area to RAM area.

FAS_SetIOInput

To set I/O input. For more information, refer to '2-2. Structure of Frame Type'.

Syntax

```
int FAS_SetIOInput(
    BYTE nPortNo,
    BYTE iSlaveNo,
    DWORD dwIOSetMask,
    DWORD dwIOCLRMask
);
```

Parameters

nPortNo
Port number of relevant drive.

iSlaveNo
Slave number of relevant drive.

dwIOSetMask
Input bitmask value to be set

dwIOCLRMask
Input bitmask value to be cleared

Return Value

FMM_OK : Command has been normally performed.

FMM_NOT_OPEN : The drive has not been connected yet.

FMM_INVALID_PORT_NUM : There is no nPort in the connected ports.

FMM_INVALID_SLAVE_NUM : There is no drive of iSlaveNo in the relevant port.

Remarks

Be careful that dwIOSetMask bit and dwIOCLRMask bit are not duplicated.

Example

```
#include "FAS_EziMOTIONPlusR.h"

void funcIO()
{
    BYTE nPortNo = 1; // COMM Port Number
    BYTE iSlaveNo = 0; // Slave No (0 ~ 15)
    DWORD dwInput, dwOutput;
    int nRtn;

    // Try to connect
    if (FAS_Connect(nPortNo, 115200) == FALSE)
    {
```

```

        // Connection failed.
        // The port is not connected or the baudrate may be wrong.
        return;
    }

    // Check I/O input.
    nRtn = FAS_GetIOInput(nPortNo, iSlaveNo, &dwInput);
    _ASSERT(nRtn == FMM_OK);
    if (dwInput & SERVO_IN_BITMASK_LIMITP)
    {
        // Limit + input is ON.
    }

    if (dwInput & SERVO_IN_BITMASK_USERIN0)
    {
        // User Input 0 is ON.
    }

    // Turning ON 'Clear Position' and 'User Input 1' inputs and turning off 'Jog +' input.
    nRtn = FAS_SetIOInput(nPortNo, iSlaveNo, SERVO_IN_BITMASK_CLEARPOSITION |
SERVO_IN_BITMASK_USERIN1, SERVO_IN_BITMASK_PJOG);
    _ASSERT(nRtn == FMM_OK);

    // Check I/O output.
    nRtn = FAS_GetIOOutput(nPortNo, iSlaveNo, &dwOutput);
    _ASSERT(nRtn == FMM_OK);
    if (dwOutput & SERVO_OUT_BITMASK_USEROUT0)
    {
        // User Output 0 is ON.
    }

    // Turn off User Output 1 and 2 signals.
    nRtn = FAS_SetIOOutput(nPortNo, iSlaveNo, 0, SERVO_OUT_BITMASK_USEROUT1 |
SERVO_OUT_BITMASK_USEROUT2);
    _ASSERT(nRtn == FMM_OK);

    // Disconnect.
    FAS_Close(nPortNo);
}

```

See Also

FAS_GetIOInput

FAS_GetIOInput

To read I/O input values. For more information, refer to '2-2. Structure of Frame Type'.

Syntax

```
int FAS_GetIOInput(
    BYTE nPortNo,
    BYTE iSlaveNo,
    DWORD* dwIOInput
);
```

Parameters

nPortNo

Port number of relevant drive.

iSlaveNo

Slave number of relevant drive.

dwIOInput

Parameter pointer which input values will be saved

Return Value

FMM_OK : Command has been normally performed.

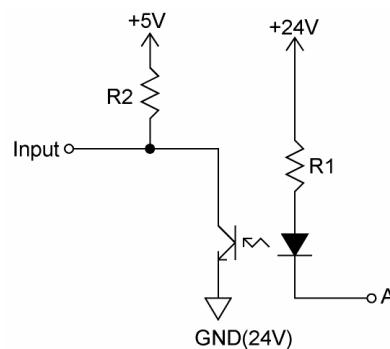
FMM_NOT_OPEN : The drive has not been connected yet.

FMM_INVALID_PORT_NUM : There is no nPort in the connected ports.

FMM_INVALID_SLAVE_NUM : There is no drive of iSlaveNo in the relevant port.

Remarks

There are 12 input pins in EziSERVO PlusR. The user can select and use 9 input pins of them. This function can read the input port status by 32bit. All of them are insulated by a photocoupler. (Refer to the figure.)



When Port A is supplied 24V from an external input port, the input is recognized to 5V(High).

Example

Refer to 'FAS_SetIOInput' library.

See Also

FAS_SetIOInput

FAS_SetIOOutput

To read I/O output values. For more information, refer to '2-2. Structure of Frame Type'.

Syntax

```
int FAS_SetIOOutput(
    BYTE nPortNo,
    BYTE iSlaveNo,
    DWORD dwIOSetMask,
    DWORD dwIOCLRMask
);
```

Parameters

nPortNo

Port number of relevant drive.

iSlaveNo

Slave number of relevant drive.

dwIOSetMask

Output bitmask value to be set

dwIOCLRMask

Output bitmask value be cleared

Return Value

FMM_OK : Command has been normally performed.

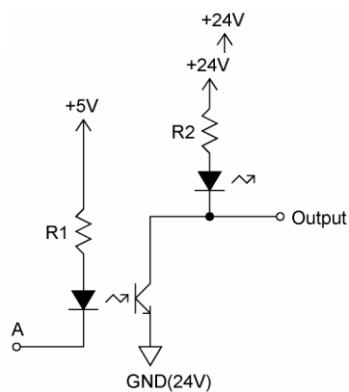
FMM_NOT_OPEN : The drive has not been connected yet.

FMM_INVALID_PORT_NUM : There is no nPort in the connected ports.

FMM_INVALID_SLAVE_NUM : There is no drive of iSlaveNo in the relevant port.

Remarks

There are 10 input pins in EziSERVO PlusR. The user can select and use 9 output pins of them.



When output data is '1', Port A becomes 0V. When it is '0', Port A becomes +5V.

Be careful that dwIOSetMask bit and dwIOCLRMask bit are not duplicated.

Example

Refer to FAS_SetIOInput.

See Also

FAS_GetIOOutput

FAS_GetIOOutput

To read I/O output values. For more information, refer to '2-2. Structure of Frame Type'.

Syntax

```
int FAS_GetIOOutput(  
    BYTE nPortNo,  
    BYTE iSlaveNo,  
    DWORD* dwIOOutput  
);
```

Parameters

nPortNo

Port number of relevant drive.

iSlaveNo

Slave number of relevant drive.

dwIOInput

Parameter pointer which the output value will be saved.

Return Value

FMM_OK : Command has been normally performed.

FMM_NOT_OPEN : The drive has not been connected yet.

FMM_INVALID_PORT_NUM : There is no nPort in the connected ports.

FMM_INVALID_SLAVE_NUM : There is no drive of iSlaveNo in the relevant port.

Remarks

Example

Refer to 'FAS_SetIOInput' library

See Also

FAS_SetIOOutput

FAS_GetIOAssignMap

To read I/O Assign Map. For more information, refer to '2-2. Structure of Frame Type'.

Syntax

```
int FAS_GetIOAssignMap(
    BYTE nPortNo,
    BYTE iSlaveNo,
    BYTE iOPinNo,
    BYTE* nIOLogic,
    BYTE* bLevel
);
```

Parameters

nPortNo
Port number of relevant drive.

iSlaveNo
Slave number of relevant drive.

iOPinNo
I/O pin number to be read

nIOLogic
Parameter pointer which the logic value assigned to a relevant pin will be saved

bLevel
Parameter pointer which the active level of relevant logic will be saved

Return Value

FMM_OK : Command has been normally performed.

FMM_NOT_OPEN : The drive has not been connected yet.

FMM_INVALID_PORT_NUM : There is no nPort in the connected ports.

FMM_INVALID_SLAVE_NUM : There is no drive of iSlaveNo in the relevant port.

Remarks

For nIOLogic, refer to 'Motion_define.h'.

Example

```
#include "FAS_EziMOTIONPlusR.h"

void funcIOAssign()
{
    BYTE nPortNo = 1; // COMM Port Number
    BYTE iSlaveNo = 0; // Slave No (0 ~ 15)
    BYTE iPinNo;
    DWORD dwLogicMask;
    BYTE bLevel;
    BYTE i;
    int nRtn;
```

```

// Try to connect
if (FAS_Connect(nPortNo, 115200) == FALSE)
{
    // Connection failed.
    // The port is not connected or the baudrate may be wrong.
    return;
}

// Check assigned information of input pin.
for (i=0; i</*Input Pin Count*/12; i++)
{
    nRtn = FAS_GetIOAssignMap(nPortNo, iSlaveNo, i, &dwLogicMask, &bLevel);
    _ASSERT(nRtn == FMM_OK);

    if (dwLogicMask != IN_LOGIC_NONE)
        printf("Input Pin %d : Logic Mask 0x%08X (%s)\n", i, dwLogicMask, ((bLevel ==
LEVEL_LOW_ACTIVE) ? "Low Active" : "High Active"));
    else
        printf("Input Pin %d : Not assigned\n", i);
}

// Assign SERVOON Logic (Low Active) to input pin 3.
iPinNo = 3;          // 0 ~ 11 value is available (Caution : 0 ~ 2 is fixed.)
nRtn = FAS_SetIOAssignMap(nPortNo, iSlaveNo, iPinNo, SERVO_IN_BITMASK_SERVOON,
LEVEL_LOW_ACTIVE);
_ASSERT(nRtn == FMM_OK);

// Check assign information of output pin.
for (i=0; i<10/*Output Pin Count*/; i++)
{
    nRtn = FAS_GetIOAssignMap(nPortNo, iSlaveNo, 12/*Input Pin Count*/ + i,
&dwLogicMask, &bLevel);
    _ASSERT(nRtn == FMM_OK);

    if (dwLogicMask != OUT_LOGIC_NONE)
        printf("Output Pin %d : Logic Mask 0x%08X (%s)\n", i, dwLogicMask, ((bLevel ==
LEVEL_LOW_ACTIVE) ? "Low Active" : "High Active"));
    else
        printf("Output Pin %d : Not assigned\n", i);
}

```

```
// Assign ALARM Logic (High Active) to output pin 9.
iPinNo = 9;          // 0 ~ 9 value is available (Caution : 0 is fixed to COMPOUT.)
nRtn = FAS_SetIOAssignMap(nPortNo, iSlaveNo, 12/*Input Pin Count*/ + iPinNo,
SERVO_OUT_BITMASK_ALARM, LEVEL_HIGH_ACTIVE);
_ASSERT(nRtn == FMM_OK);

// Disconnect.
FAS_Close(nPortNo);
}
```

See Also

FAS_SetIOAssignMap

FAS_SetIOAssignMap

To set I/O Assign Map. For more information, refer to '2-2. Structure of Frame Type'.

Syntax

```
int FAS_SetIOAssignMap(
    BYTE nPortNo,
    BYTE iSlaveNo,
    BYTE iOPinNo,
    BYTE nLogicNo,
    BYTE bLevel
);
```

Parameters

nPortNo
Port number of relevant drive.

iSlaveNo
Slave number of relevant drive.

iOPinNo
I/O Pin number to be read

nIOLogic
Logic value to be assigned to the relevant pin

bLevel
Active Level value of the relevant logic

Return Value

FMM_OK : Command has been normally performed.

FMM_NOT_OPEN : The drive has not been connected yet.

FMM_INVALID_PORT_NUM : There is no nPort in the connected ports.

FMM_INVALID_SLAVE_NUM : There is no drive of iSlaveNo in the relevant port.

FMM_INVALID_PARAMETER_NUM : Designated iOPinNo or nIOLogic value is out of range.

Remarks

To save current setting values to the memory, 'FAS_SaveAllParameters' library should be run.

Example

Refer to 'FAS_GSetIOAssignMap' library

See Also

FAS_GetIOAssignMap

FAS_IOAssignMapReadROM

To load the status of CN1 assignment being saved in ROM area.

Syntax

```
int FAS_PosTableReadROM(  
    BYTE nPortNo,  
    BYTE iSlaveNo  
);
```

Parameters

nPortNo
Port number of relevant drive.

iSlaveNo
Slave number of relevant drive.

Return Value

FMM_OK : Command has been normally performed.

FMM_NOT_OPEN : The drive has not been connected yet.

FMM_INVALID_PORT_NUM : There is no nPort in the connected ports.

FMM_INVALID_SLAVE_NUM : There is no drive of iSlaveNo in the relevant port.

Remarks

Example

See Also

FAS_GetIOAssignMap

3.7 Position Control Function

Function Name	Description
FAS_SetCommandPos	To set the command position value.
FAS_SetActualPos	To set the current position to the actual position value.
FAS_GetCommandPos	To read the current command position value.
FAS_GetActualPos	To read the actual command position value.
FAS_GetPosError	To read the difference between the actual position value and the command position value.
FAS_GetActualVel	To read the actual running speed value while the motor is moving.
FAS_ClearPosition	To set the command position and actual position value to '0'.

FAS_SetCommandPos

To set the command position value to the motor.

Syntax

```
int FAS_SetCommandPos(
    BYTE nPortNo,
    BYTE iSlaveNo,
    long iCmdPos
);
```

Parameters

nPortNo
Port number of relevant drive.

iSlaveNo
Slave number of relevant drive.

iCmdPos
Command position value to be set.

Return Value

FMM_OK : Command has been normally performed.

FMM_NOT_OPEN : The drive has not been connected yet.

FMM_INVALID_PORT_NUM : There is no nPort in the connected ports.

FMM_INVALID_SLAVE_NUM : There is no drive of iSlaveNo in the relevant port.

Remarks

The user sets the position command (pulse output counter) value.

This function is generally used when the user sets the current position to coordinates that he wants.

Example

```
#include "FAS_EziMOTIONPlusR.h"

void funcClearPosition()
{
    BYTE nPortNo = 1; // COMM Port Number
    BYTE iSlaveNo = 0; // Slave No (0 ~ 15)
    int nRtn;

    // Try to connect
    if (FAS_Connect(nPortNo, 115200) == FALSE)
    {
        // Connection failed.
        // The port is not connected or the baudrate may be wrong.
        return;
    }
}
```

```
    }

    // Initialize Command Position and Actual Position values to 0.
    nRtn = FAS_SetCommandPos(nPortNo, iSlaveNo, 0);
    _ASSERT(nRtn == FMM_OK);
    nRtn = FAS_SetActualPos(nPortNo, iSlaveNo, 0);
    _ASSERT(nRtn == FMM_OK);

    // Disconnect.
    FAS_Close(nPortNo);
}
```

See Also

FAS_SetActualPos

FAS_SetActualPos

To set the actual position value to the motor.

Syntax

```
int FAS_SetActualPos(  
    BYTE nPortNo,  
    BYTE iSlaveNo,  
    long lActPos  
);
```

Parameters

nPortNo
Port number of relevant drive.

iSlaveNo
Slave number of relevant drive.

lActPos
Actual position value to be set.

Return Value

FMM_OK : Command has been normally performed.

FMM_NOT_OPEN : The drive has not been connected yet.

FMM_INVALID_PORT_NUM : There is no nPort in the connected ports.

FMM_INVALID_SLAVE_NUM : There is no drive of iSlaveNo in the relevant port.

Remarks

The user sets the encoder feedback counter value to the value that he wants.

Example

Refer to 'FAS_GetActualPos' library.

See Also

FAS_SetCommandPos

FAS_GetCommandPos

To read the command position of the current motor.

Syntax

```
int FAS_GetCommandPos(  
    BYTE nPortNo,  
    BYTE iSlaveNo,  
    long* ICmdPos  
);
```

Parameters

nPortNo
Port number of relevant drive

iSlaveNo
Slave number of relevant drive

ICmdPos
Parameter pointer that command position value will be saved

Return Value

FMM_OK : Command has been normally performed.

FMM_NOT_OPEN : The drive has not been connected yet.

FMM_INVALID_PORT_NUM : There is no nPort in the connected ports.

FMM_INVALID_SLAVE_NUM : There is no drive of iSlaveNo in the relevant port.

Remarks

To read the position command (pulse output counter) value.

Example

```
#include "FAS_ EziMOTIONPlusR.h"  
  
void funcDisplayStatus()  
{  
    BYTE nPortNo = 1; // COMM Port Number  
    BYTE iSlaveNo = 0; // Slave No (0 ~ 15)  
    long lValue;  
    int nRtn;  
  
    // Try to connect  
    if (FAS_Connect(nPortNo, 115200) == FALSE)  
    {  
        // Connection failed.  
        // The port is not connected or the baudrate may be wrong.  
        return;  
    }  
}
```

```
}

// Check position information of Ezi-SERVO Plus-R.
nRtn = FAS_GetCommandPos(nPortNo, iSlaveNo, &IValue);
_ASSERT(nRtn == FMM_OK);
printf("CMDPOS : %d \n", IValue);
nRtn = FAS_GetActualPos(nPortNo, iSlaveNo, &IValue);
_ASSERT(nRtn == FMM_OK);
printf("ACTPOS : %d \n", IValue);
nRtn = FAS_GetPosError(nPortNo, iSlaveNo, &IValue);
_ASSERT(nRtn == FMM_OK);
printf("POSERR : %d \n", IValue);
nRtn = FAS_GetActualVel(nPortNo, iSlaveNo, &IValue);
_ASSERT(nRtn == FMM_OK);
printf("ACTVEL : %d \n", IValue);

// Disconnect.
FAS_Close(nPortNo);
}
```

See Also

FAS_GetActualPos

FAS_GetActualPos

To read the actual position value of the motor.

Syntax

```
int FAS_GetActualPos(  
    BYTE nPortNo,  
    BYTE iSlaveNo,  
    long* lActPos  
);
```

Parameters

nPortNo

Port number of relevant drive.

iSlaveNo

Slave number of relevant drive.

lActPos

Parameter pointer which the actual position value will be saved.

Return Value

FMM_OK : Command has been normally performed.

FMM_NOT_OPEN : The drive has not been connected yet.

FMM_INVALID_PORT_NUM : There is no nPort in the connected ports.

FMM_INVALID_SLAVE_NUM : There is no drive of iSlaveNo in the relevant port.

Remarks

When the user decides the motor position and checks its actual position, this function is generally used.

Example

Refer to 'FAS_GetCommandPosition' library.

See Also

FAS_GetCommandPos

FAS_GetPosError

To read the position error of the motor.

Syntax

```
int FAS_GetPosError(  
    BYTE nPortNo,  
    BYTE iSlaveNo,  
    long* IPosErr  
);
```

Parameters

nPortNo

Port number of relevant drive.

iSlaveNo

Slave number of relevant drive.

IPosErr

Parameter pointer which the position error value will be saved

Return Value

FMM_OK : Command has been normally performed.

FMM_NOT_OPEN : The drive has not been connected yet.

FMM_INVALID_PORT_NUM : There is no nPort in the connected ports.

FMM_INVALID_SLAVE_NUM : There is no drive of iSlaveNo in the relevant port.

Remarks

Example

Refer to 'FAS_GetCommandPosition' library.

See Also

FAS_GetCommandPos,

FAS_GetActualPos

FAS_GetActualVel

To read the actual velocity of the motor.

Syntax

```
int FAS_GetActualVel(  
    BYTE nPortNo,  
    BYTE iSlaveNo,  
    long* lActVel  
);
```

Parameters

nPortNo

Port number of relevant drive.

iSlaveNo

Slave number of relevant drive.

lActVel

Parameter pointer which the actual velocity value will be saved

Return Value

FMM_OK : Command has been normally performed.

FMM_NOT_OPEN : The drive has not been connected yet.

FMM_INVALID_PORT_NUM : There is no nPort in the connected ports.

FMM_INVALID_SLAVE_NUM : There is no drive of iSlaveNo in the relevant port.

Remarks

Example

Refer to 'FAS_GetCommandPosition' library.

See Also

FAS_ClearPosition

To set the command position value and actual value to '0'.

Syntax

```
int FAS_SetCommandPos(  
    BYTE nPortNo,  
    BYTE iSlaveNo  
);
```

Parameters

nPortNo
Port number of relevant drive.

iSlaveNo
Slave number of relevant drive.

Return Value

FMM_OK : Command has been normally performed.

FMM_NOT_OPEN : The drive has not been connected yet.

FMM_INVALID_PORT_NUM : There is no nPort in the connected ports.

FMM_INVALID_SLAVE_NUM : There is no drive of iSlaveNo in the relevant port.

Remarks

The user sets the position command (pulse output counter) value.

This function is generally used when the user sets the current position to initial values.

Example

```
#include "FAS_EziMOTIONPlusR.h"  
  
void funcClearPosition()  
{  
    BYTE nPortNo = 1; // COMM Port Number  
    BYTE iSlaveNo = 0; // Slave No (0 ~ 15)  
    int nRtn;  
  
    // Try to connect  
    if (FAS_Connect(nPortNo, 115200) == FALSE)  
    {  
        // Connection failed.  
        // The port is not connected or the baudrate may be wrong.  
        return;  
    }  
}
```

```
// Initialize Command Position and Actual Position values to 0.  
nRtn = FAS_ClearPosition(nPortNo, iSlaveNo);  
_ASSERT(nRtn == FMM_OK);  
  
// Disconnect.  
FAS_Close(nPortNo);  
}
```

See Also

FAS_SetActualPos

3.8 Drive Status Control Function

Function Name	Description
FAS_GetIOAxisStatus	To read control I/O status, running status Flag value : The current input status value, the output setting status value, and the running status Flag value will return.
FAS_GetMotionStatus	To read the current running progress status and its PT number : The command position value, the actual position value, the speed value will return.
FAS_GetAllStatus	To read all status including the current I/O status at one time : This function is to combine 'FAS_GetIOAxisStatus' function and 'FAS_GetMotionStatus' function.
FAS_GetAxisStatus	To read the running status Flag value of the relevant drive.

FAS_GetIOAxisStatus

To read I/O Input and Output values of the relevant drive, and the motor Axis Status.

Syntax

```
int FAS_GetIOAxisStatus(
    BYTE nPortNo,
    BYTE iSlaveNo,
    DWORD* dwInStatus,
    DWORD* dwOutStatus,
    DWORD* dwAxisStatus
);
```

Parameters

nPortNo
Port number of relevant drive.

iSlaveNo
Slave number of relevant drive.

dwInStatus
Parameter pointer which the I/O input value will be saved.

dwOutStatus
Parameter pointer which the I/O output value will be saved.

dwAxisStatus
Parameter pointer which the axis status value of the relevant motor will be saved

Return Value

FMM_OK : Command has been normally performed.

FMM_NOT_OPEN : The drive has not been connected yet.

FMM_INVALID_PORT_NUM : There is no nPort in the connected ports.

FMM_INVALID_SLAVE_NUM : There is no drive of iSlaveNo in the relevant port.

Remarks

Example

Refer to 'FAS_MoveSingleAxisAbsPos' library.

See Also

FAS_GetMotionStatus

To read the motion status of current motor at one time.

Syntax

```
int FAS_GetMotionStatus(
    BYTE nPortNo,
    BYTE iSlaveNo,
    long* ICmdPos,
    long* IActPos,
    long* IPosErr,
    long* IActVel,
    WORD* wPosItemNo
);
```

Parameters

nPortNo

Port number of relevant drive.

iSlaveNo

Slave number of relevant drive.

ICmdPos

Parameter pointer which the command position value will be saved

IActPos

Parameter pointer which the actual position value will be saved.

IPosErr

Parameter pointer which the position error value will be saved

IActVel

Parameter pointer which the actual velocity value will be saved

wPosItemNo

Parameter pointer which current running item number in the Position Table will be saved

Return Value

FMM_OK : Command has been normally performed.

FMM_NOT_OPEN : The drive has not been connected yet.

FMM_INVALID_PORT_NUM : There is no nPort in the connected ports.

FMM_INVALID_SLAVE_NUM : There is no drive of iSlaveNo in the relevant port.

Remarks

Example

Refer to 'FAS_MoveSingleAxisAbsPos' library.

See Also

FAS_GetAllStatus

To read I/O Input and Output values of the relevant drive, the motor Axis Status, the motor motion status.

Syntax

```
int FAS_GetAllStatus(
    BYTE nPortNo,
    BYTE iSlaveNo,
    DWORD* dwInStatus,
    DWORD* dwOutStatus,
    DWORD* dwAxisStatus,
    long* lCmdPos,
    long* lActPos,
    long* lPosErr,
    long* lActVel,
    WORD* wPosItemNo
);
```

Parameters

- nPortNo*
Port number of relevant drive.
- iSlaveNo*
Slave number of relevant drive.
- dwInStatus*
Parameter pointer which the I/O input value will be saved.
- dwOutStatus*
Parameter pointer which the I/O output value will be saved.
- dwAxisStatus*
Parameter pointer which the axis status value of the relevant motor will be saved
- lCmdPos*
Parameter pointer which the command position value will be saved
- lActPos*
Parameter pointer which the actual position value will be saved
- lPosErr*
Parameter pointer which the position error value will be saved
- lActVel*
Parameter pointer which the actual velocity value will be saved
- wPosItemNo*
Parameter pointer which current running item number in the Position Table will be saved

Return Value

- FMM_OK : Command has been normally performed.
- FMM_NOT_OPEN : The drive has not been connected yet.
- FMM_INVALID_PORT_NUM : There is no nPort in the connected ports.
- FMM_INVALID_SLAVE_NUM : There is no drive of iSlaveNo in the relevant port.

Remarks

Example

Refer to 'FAS_MoveSingleAxisAbsPos' library.

See Also

FAS_GetAxisStatus

FAS_GetMotionStatus

FAS_GetAxisStatus

To read the motor Axis Status value. For status Flag, refer to '2-2. Structure of Frame Type'.

Syntax

```
int FAS_GetAxisStatus(  
    BYTE nPortNo,  
    BYTE iSlaveNo,  
    DWORD* dwAxisStatus  
);
```

Parameters

nPortNo

Port number of relevant drive.

iSlaveNo

Slave number of relevant drive.

dwAxisStatus

Parameter pointer which the axis status value of the relevant motor

Return Value

FMM_OK : Command has been normally performed.

FMM_NOT_OPEN : The drive has not been connected yet.

FMM_INVALID_PORT_NUM : There is no nPort in the connected ports.

FMM_INVALID_SLAVE_NUM : There is no drive of iSlaveNo in the relevant port.

Remarks

Example

Refer to 'FAS_MoveSingleAxisAbsPos' library.

See Also

3.9 Running Control Function

Function Name	Description
FAS_MoveStop	The motor in running is decelerate and stopped.
FAS_EmergencyStop	The motor in running stops directly without deceleration
FAS_MoveOriginSingleAxis	The motor starts the origin return.
FAS_MoveSingleAxisAbsPos	The motor moves as much as the given absolute position value.
FAS_MoveSingleAxisIncPos	The motor moves as much as the given incremental position value.
FAS_MoveToLimit	The motor moves up to the position that the limit sensor is detected.
FAS_MoveVelocity	The motor moves to the given velocity and direction: This function is available to Jog motion.
FAS_PositionAbsOverride	While the motor is running, the target absolute position value [pulse] is changed.
FAS_PositionIncOverride	While the motor is running, the target incremental position value [pulse] is changed.
FAS_VelocityOverride	While the motor is running, the running velocity value [pulse] is changed. (Caution : 'Changed running speed' must be over 30[pps])
FAS_AllMoveStop	All motors that connected in same port are decelerate and stopped.
FAS_AllEmergencyStop	All motors that connected in same port are directly stop without deceleration.
FAS_AllMoveOriginSingleAxis	All motors that connected in same port are starts the origin return.
FAS_AllMoveSingleAxisAbsPos	All motors that connected in same port moves as much as the given absolute position value.
FAS_AllMoveSingleAxisIncPos	All motors that connected in same port moves as much as the given incremental position value.
FAS_MoveLinearAbsPos	More than 2 motors that connected in same port Linear Interpolation moves as much as the given absolute position value.
FAS_MoveLinearIncPos	More than 2 motors that connected in same port Linear Interpolation moves as much as the given incremental position value.
FAS_MoveSingleAxisAbsPosEx	The motor moves as much as the given absolute position value with custom accel/decel time value.
FAS_MoveSingleAxisIncPosEx	The motor moves as much as the given incremental position value with custom accel/decel time value.
FAS_MoveVelocityEx	The motor moves to the given velocity and direction: This function is available to Jog motion with custom accel/decel time value.
FAS_MovePause	The motor starts pause in runing or the motor starts again In pause status.

FAS_MoveStop

To stop the motor.

Syntax

```
int FAS_MoveStop(  
    BYTE nPortNo,  
    BYTE iSlaveNo,  
);
```

Parameters

nPortNo
Port number of relevant drive.

iSlaveNo
Slave number of relevant drive.

Return Value

FMM_OK : Command has been normally performed.

FMM_NOT_OPEN : The drive has not been connected yet.

FMM_INVALID_PORT_NUM : There is no nPort in the connected ports.

FMM_INVALID_SLAVE_NUM : There is no drive of iSlaveNo in the relevant port.

Remarks

Example

Refer to 'FAS_MoveSingleAxisAbsPos' library.

See Also

FAS_EmergencyStop

To stop the motor without deceleration.

Syntax

```
int FAS_EmergencyStop(  
    BYTE nPortNo,  
    BYTE iSlaveNo,  
);
```

Parameters

nPortNo
Port number of relevant drive.

iSlaveNo
Slave number of relevant drive.

Return Value

FMM_OK : Command has been normally performed.

FMM_NOT_OPEN : The drive has not been connected yet.

FMM_INVALID_PORT_NUM : There is no nPort in the connected ports.

FMM_INVALID_SLAVE_NUM : There is no drive of iSlaveNo in the relevant port.

Remarks

This function does not include deceleration phase. So, the user must be careful so that the machine cannot be impacted.

Example

Refer to 'FAS_MoveSingleAxisAbsPos' library.

See Also

FAS_MoveOriginSingleAxis

To search the origin of system. For more information, refer to '[User Manual_Text 7.4 Origin Return](#)'.

Syntax

```
int FAS_MoveOriginSingleAxis(  
    BYTE nPortNo,  
    BYTE iSlaveNo,  
);
```

Parameters

nPortNo

Port number of relevant drive.

iSlaveNo

Slave number of relevant drive.

Return Value

FMM_OK : Command has been normally performed.

FMM_NOT_OPEN : The drive has not been connected yet.

FMM_INVALID_PORT_NUM : There is no nPort in the connected ports.

FMM_INVALID_SLAVE_NUM : There is no drive of iSlaveNo in the relevant port.

Remarks

Example

Refer to 'FAS_MoveSingleAxisAbsPos' library.

See Also

FAS_MoveSingleAxisAbsPos

To move the motor to the absolute coordinate.

Syntax

```
int FAS_MoveSingleAxisAbsPos(
    BYTE nPortNo,
    BYTE iSlaveNo,
    long lAbsPos,
    DWORD lVelocity,
);
```

Parameters

nPortNo
Port number of relevant drive.

iSlaveNo
Slave number of relevant drive.

lAbsPos
Absolute coordinate of position to move

lVelocity
Velocity when the motor moves

Return Value

FMM_OK : Command has been normally performed.

FMM_NOT_OPEN : The drive has not been connected yet.

FMM_INVALID_PORT_NUM : There is no nPort in the connected ports.

FMM_INVALID_SLAVE_NUM : There is no drive of iSlaveNo in the relevant port.

Remarks

Example

```
#include "FAS_EziMOTIONPlusR.h"

void funcMove()
{
    BYTE nPortNo = 1; // COMM Port Number
    BYTE iSlaveNo = 0; // Slave No (0 ~ 15)
    DWORD dwAxisStatus, dwInput;
    EZISERVO_AXISSTATUS stAxisStatus;
    long lAbsPos, lIncPos, lVelocity;
    int nRtn;

    // Try to connect
    if (FAS_Connect(nPortNo, 115200) == FALSE)
    {
```

```

        // Connection failed.
        // The port is not connected or the baudrate may be wrong.
        return;
    }

    // Check error and Servo ON status.
    nRtn = FAS_GetAxisStatus(nPortNo, iSlaveNo, &dwAxisStatus);
    _ASSERT(nRtn == FMM_OK);
    stAxisStatus.dwValue = dwAxisStatus;

    //if (dwAxisStatus & 0x00000001)
    if (stAxisStatus.FFLAG_ERRORALL)
        FAS_ServoAlarmReset(nPortNo, iSlaveNo);
    //if ((dwAxisStatus & 0x00100000) == 0x00)
    if (stAxisStatus.FFLAG_SERVOON == 0)
        FAS_ServoEnable(nPortNo, iSlaveNo, TRUE);

    // Check input status.
    nRtn = FAS_GetIOInput(nPortNo, iSlaveNo, &dwInput);
    _ASSERT(nRtn == FMM_OK);

    if (dwInput & (SERVO_IN_BITMASK_STOP | SERVO_IN_BITMASK_PAUSE | SERVO_IN_BITMASK_ESTOP))
        FAS_SetIOInput(nPortNo, iSlaveNo, 0, SERVO_IN_BITMASK_STOP | SERVO_IN_BITMASK_PAUSE | SERVO_IN_BITMASK_ESTOP);

    // Increase the motor to 15000 pulse.
    lIncPos = 15000;
    lVelocity = 30000;
    nRtn = FAS_MoveSingleAxisIncPos(nPortNo, iSlaveNo, lIncPos, lVelocity);
    _ASSERT(nRtn == FMM_OK);

    // Stand by until motion command is completely finished.
    do
    {
        Sleep(1);

        nRtn = FAS_GetAxisStatus(nPortNo, iSlaveNo, &dwAxisStatus);
        _ASSERT(nRtn == FMM_OK);
        stAxisStatus.dwValue = dwAxisStatus;
    }

```



```
while (stAxisStatus.FFLAG_MOTIONING);

// Move the motor to '0'.
IAbsPos = 0;
IVelocity = 20000;
nRtn = FAS_MoveSingleAxisAbsPos(nPortNo, iSlaveNo, IAbsPos, IVelocity);
_ASSERT(nRtn == FMM_OK);

// Stand by until motion command is completely finished
do
{
    Sleep(1);

    nRtn = FAS_GetAxisStatus(nPortNo, iSlaveNo, &dwAxisStatus);
    _ASSERT(nRtn == FMM_OK);
    stAxisStatus.dwValue = dwAxisStatus;
}
while (stAxisStatus.FFLAG_MOTIONING);

// Disconnect.
FAS_Close(nPortNo);
}
```

See Also

FAS_MoveSingleAxisIncPos

To move the motor to the incremental coordinate value.

Syntax

```
int FAS_MoveSingleAxisIncPos(  
    BYTE nPortNo,  
    BYTE iSlaveNo,  
    long lIncPos,  
    DWORD lVelocity  
);
```

Parameters

nPortNo
Port number of relevant drive.

iSlaveNo
Slave number of relevant drive.

lIncPos
Incremental coordinate of position to move

lVelocity
Velocity when the motor moves

Return Value

FMM_OK : Command has been normally performed.

FMM_NOT_OPEN : The drive has not been connected yet.

FMM_INVALID_PORT_NUM : There is no nPort in the connected ports.

FMM_INVALID_SLAVE_NUM : There is no drive of iSlaveNo in the relevant port.

Remarks

Example

Refer to 'FAS_MoveSingleAxisAbsPos' library.

See Also

FAS_MoveToLimit

To give the motor a command to search the limit sensor.

Syntax

```
int FAS_MoveToLimit(  
    BYTE nPortNo,  
    BYTE iSlaveNo,  
    DWORD IVelocity,  
    int iLimitDir,  
);
```

Parameters

nPortNo
Port number of relevant drive.

iSlaveNo
Slave number of relevant drive.

IVelocity
Velocity when the motor moves

iLimitDir
Limit direction which the motor moves (0: -Limit, 1: +Limit)

Return Value

FMM_OK : Command has been normally performed.

FMM_NOT_OPEN : The drive has not been connected yet.

FMM_INVALID_PORT_NUM : There is no nPort in the connected ports.

FMM_INVALID_SLAVE_NUM : There is no drive of iSlaveNo in the relevant port.

Remarks

Example

Refer to 'FAS_MoveSingleAxisAbsPos' library.

See Also

FAS_MoveVelocity

To move the motor to the relevant direction and velocity. This function is also available for Jog motion.

Syntax

```
int FAS_MoveVelocity(  
    BYTE nPortNo,  
    BYTE iSlaveNo,  
    DWORD IVelocity,  
    int iVelDir  
);
```

Parameters

nPortNo
Port number of relevant drive.

iSlaveNo
Slave number of relevant drive.

IVelocity
Velocity when the motor moves

iVelDir
Direction which the motor moves (0: -Jog, 1: +Jog)

Return Value

FMM_OK : Command has been normally performed.

FMM_NOT_OPEN : The drive has not been connected yet.

FMM_INVALID_PORT_NUM : There is no nPort in the connected ports.

FMM_INVALID_SLAVE_NUM : There is no drive of iSlaveNo in the relevant port.

Remarks

Example

Refer to 'FAS_MoveSingleAxisAbsPos' library.

See Also

FAS_PositionAbsOverride

To change the absolute position value set while the motor moves to the absolute position.

Syntax

```
int FAS_PositionAbsOverride(
    BYTE nPortNo,
    BYTE iSlaveNo,
    long IOverridePos
);
```

Parameters

nPortNo

Port number of relevant drive.

iSlaveNo

Slave number of relevant drive.

IOverridePos

Absolute coordinate position value to be changed

Return Value

FMM_OK : Command has been normally performed.

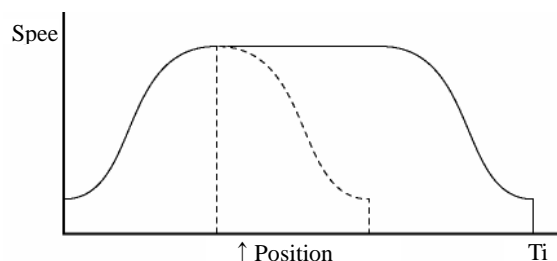
FMM_NOT_OPEN : The drive has not been connected yet.

FMM_INVALID_PORT_NUM : There is no nPort in the connected ports.

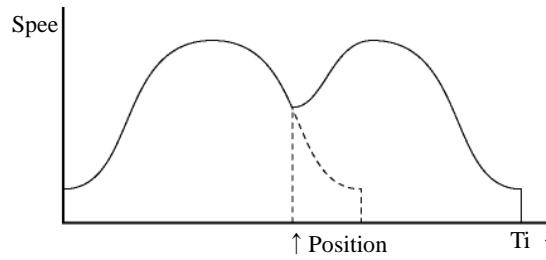
FMM_INVALID_SLAVE_NUM : There is no drive of iSlaveNo in the relevant port.

Remarks

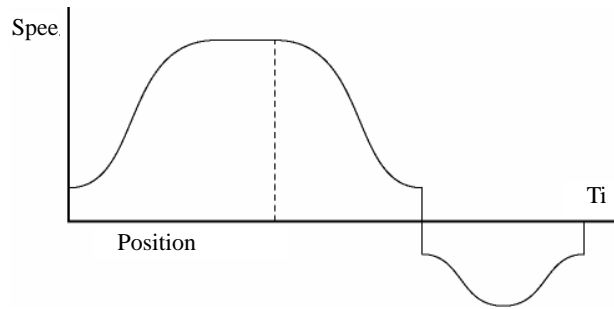
- 1) If the target position is set to the farther coordinate than the original target position while the motor moves to the accelerated or uniform velocity, the motor moves to the velocity pattern until then and stops the target position.



- 2) If the target position is changed while the motor is decelerated, it is again accelerated up to the uniform velocity and then stops to the target position.



- 3) If the changed target position is set to the closer coordinate than the original target position, the motor move to the changed target position.



Example

Refer to 'FAS_MoveSingleAxisAbsPos' library.

See Also

FAS_PositionIncOverride

FAS_PositionIncOverride

To change the incremental position value set while the motor moves to the incremental position.

Syntax

```
int FAS_PositionIncOverride(  
    BYTE nPortNo,  
    BYTE iSlaveNo,  
    long IOverridePos  
);
```

Parameters

nPortNo
Port number of relevant drive.

iSlaveNo
Slave number of relevant drive.

IOverridePos
Incremental coordinate position value to be changed

Return Value

FMM_OK : Command has been normally performed.

FMM_NOT_OPEN : The drive has not been connected yet.

FMM_INVALID_PORT_NUM : There is no nPort in the connected ports.

FMM_INVALID_SLAVE_NUM : There is no drive of iSlaveNo in the relevant port.

Remarks

Refer to 'FAS_PositionAbsOverride' library.

Example

Refer to 'FAS_MoveSingleAxisAbsPos' library.

See Also

FAS_PositionAbsOverride

FAS_VelocityOverride

To change the velocity set while the motor moves.

(Caution : 'Changed running speed' must be over 30[pps])

Syntax

```
int FAS_VelocityOverride(
    BYTE nPortNo,
    BYTE iSlaveNo,
    DWORD IVelocity
);
```

Parameters

nPortNo

Port number of relevant drive.

iSlaveNo

Slave number of relevant drive.

IVelocity

Velocity to be changed in [pps]

Return Value

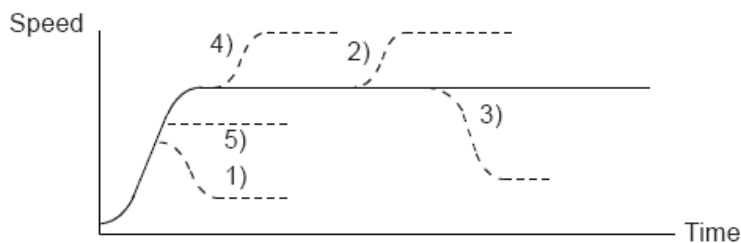
FMM_OK : Command has been normally performed.

FMM_NOT_OPEN : The drive has not been connected yet.

FMM_INVALID_PORT_NUM : There is no nPort in the connected ports.

FMM_INVALID_SLAVE_NUM : There is no drive of iSlaveNo in the relevant port.

Remarks



1) In case of ((change speed) < (speed before change)), the motor reaches the change speed through acceleration/deceleration using a new velocity pattern.

5) In case of ((change speed) ≥ (speed before change)), the motor reaches the change speed

through acceleration/deceleration without any new velocity pattern.

- 4) The motor reaches the 'speed before change' without a change of the velocity pattern and then it reaches the 'change speed' by a new velocity pattern.
- 2),3) After acceleration/deceleration is finished, the motor reaches the change speed corresponding to the velocity pattern of the 'change speed'.

Example

Refer to 'FAS_MoveSingleAxisAbsPos' library.

See Also

FAS_AllMoveStop

To stop the motor that connected in same port.

Syntax

```
int FAS_AllMoveStop(  
    BYTE nPortNo,  
    BYTE iSlaveNo,  
    );
```

Parameters

nPortNo
Port number of relevant drive.

iSlaveNo
Slave number of relevant drive. (must be '99')

Return Value

No response

Remarks

Example

Refer to 'FAS_MoveSingleAxisAbsPos' library.

See Also

FAS_AllEmergencyStop

To stop the motor that connected in same port without deceleration.

Syntax

```
int FAS_AllEmergencyStop(  
    BYTE nPortNo,  
    BYTE iSlaveNo,  
);
```

Parameters

nPortNo
Port number of relevant drive.

iSlaveNo
Slave number of relevant drive. (must be '99')

Return Value

No response

Remarks

This function does not include deceleration phase. So, the user must be careful so that the machine cannot be impacted.

Example

Refer to 'FAS_MoveSingleAxisAbsPos' library.

See Also

FAS_AllMoveOriginSingleAxis

To search the origin of system for all motor that is connected in same port. For more information, refer to [‘User Manual_Text 7.4 Origin Return’](#).

Syntax

```
int FAS_AllMoveOriginSingleAxis(  
    BYTE nPortNo,  
    BYTE iSlaveNo,  
);
```

Parameters

nPortNo

Port number of relevant drive.

iSlaveNo

Slave number of relevant drive. (must be ‘99’)

Return Value

No response

Remarks

Example

Refer to ‘FAS_MoveSingleAxisAbsPos’ library.

See Also

FAS_AllMoveSingleAxisAbsPos

To move the motor that connected in same port to the absolute coordinate.

Syntax

```
int FAS_AllMoveSingleAxisAbsPos(  
    BYTE nPortNo,  
    BYTE iSlaveNo,  
    long lAbsPos,  
    DWORD lVelocity,  
);
```

Parameters

nPortNo
Port number of relevant drive.

iSlaveNo
Slave number of relevant drive. (must be '99')

lAbsPos
Absolute coordinate of position to move

lVelocity
Velocity when the motor moves

Return Value

No response

Remarks

Example

See Also

FAS_AllMoveSingleAxisIncPos

To move the motor that connected in same port to the incremental coordinate value.

Syntax

```
int FAS_AllMoveSingleAxisIncPos(  
    BYTE nPortNo,  
    BYTE iSlaveNo,  
    long lIncPos,  
    DWORD lVelocity  
);
```

Parameters

nPortNo
Port number of relevant drive.

iSlaveNo
Slave number of relevant drive. (must be '99')

lIncPos
Incremental coordinate of position to move

lVelocity
Velocity when the motor moves

Return Value

No response

Remarks

Example

Refer to 'FAS_MoveSingleAxisAbsPos' library.

See Also

FAS_MoveLinearAbsPos / FAS_MoveLinearIncPos

To move(Linear Interpolation) more than 2 motors that connected in same port to the absolute /incremental coordinate.

Syntax

```
int FAS_MoveLinearAbsPos(
    BYTE nPortNo,
    BYTE nNoOfSlaves,
    BYTE *iSlaveNo,
    long *lAbsPos,

    DWORD lFeedrate,
    WORD wAccelTime
);
```

Parameters

nPortNo
Port number of relevant drive.

nNoOfSlaves
Slave numbers for Linear motioning.

iSlaveNo
Array of Slave numbers.

lAbsPos
Array of position value for each slave. (in case of incremental : Distance)

lFeedrate
Speed value for motioning.

wAccelTime
Acceleration & deceleration time value.

Return Value

FMM_OK : Command has been successfully performed.

FMM_NOT_OPEN : The drive has not been connected yet.

FMM_INVALID_PORT_NUM : There is no nPort in the connected ports.

FMM_INVALID_SLAVE_NUM : There is no drive of iSlaveNo in the relevant port.

Remarks

When this function is used, the 'Start speed' value must be designated to '1'.

Example

```
#include "FAS_EziMOTIONPlusR.h"
```

```
void funcMoveLinearInc()
```

```

{
    BYTE nPortNo = 1;           // Port number : 1
    BYTE nNoOfSlaves = 2;       // 2axes
    BYTE iSlaveNo[nNoOfSlaves] = {0,1};
    Long lFeedrate = 2000;       // Linear motion speed 2000pps
    WORD wAccTime = 100;         // accel/decel time 100ms
    Int nRtn;

    Long lIncPos[nNoOfSlaves] = {1000, 5000}; //0: 1000pulse, 1: 5000pulse

    // Interpolation move function of 2 axes
    nRtn = FAS_MoveLinearIncPos(nPortNo, nNoOfSlaves, iSlavesNo, lIncPos, lFeedrate,
                                wAccTime);

    if(nRtn != FMM_OK)
    {
        TCHAR chMsg[100];
        _sprintf(chMsg, _T("FAS_MoveLinearIncPos() Function Fail : %d"), nRtn);
        MessageBox(chMsg, _T("Error"). MB_OK);
    }
}

```

See Also

FAS_MoveVelocityEx

To move the motor to the relevant direction and velocity. This function is also available for Jog motion.

Syntax

```
int FAS_MoveVelocityEx(
    BYTE nPortNo,
    BYTE iSlaveNo,
    DWORD lVelocity,
    int iVelDir,
    VELOCITY_OPTION_EX* lpExOption
);
```

Parameters

nPortNo
Port number of relevant drive.

iSlaveNo
Slave number of relevant drive.

lVelocity
Velocity when the motor moves

iVelDir
Direction which the motor moves (0: -Jog, 1: +Jog)

lpExOption
Custom option.

Return Value

FMM_OK : Command has been normally performed.

FMM_NOT_OPEN : The drive has not been connected yet.

FMM_INVALID_PORT_NUM : There is no nPort in the connected ports.

FMM_INVALID_SLAVE_NUM : There is no drive of iSlaveNo in the relevant port

Remarks

Refer to VELOCITY_OPTION_EX struct

Example

```
#include "FAS_EziMOTIONPlusR.h"

void funcMoveVelocityEx()
{
    BYTE nPortNo = 1;    // COMM Port Number
    BYTE iSlaveNo = 0;    // Slave No (0 ~ 15)
    long lVelocity;
    VELOCITY_OPTION_EX opt = {0};
    int nRtn;

    // Try to connect
```

```
if (FAS_Connect(nPortNo, 115200) == FALSE)
{
    // Connection failed.
    // The port number may be wrong, or incorrect Baudrate.
    return;
}

// Moving motor with different acc/dec time : FAS_MoveSingleAxisIncPosEx
IVelocity = 30000;

opt.flagOption.BIT_USE_CUSTOMACCDEC = 1;
opt.wCustomAccDecTime = 300;

nRtn = FAS_MoveVelocityEx(nPortNo, iSlaveNo, IVelocity, DIR_INC, &opt);
_ASSERT(nRtn == FMM_OK);

Sleep(5000);
FAS_MoveStop(nPortNo, iSlaveNo);
}.
```

See Also

3.10 Position Table Control Function

Function Name	Description
FAS_PosTableReadItem	To read items of RAM area in the specific all items of position table.
FAS_PosTableWriteItem	To save specific all items of position table items to RAM area.
FAS_PosTableWriteROM	To save all of position table values to ROM area : Total 256 PT values are saved.
FAS_PosTableReadROM	To read position table values in ROM area : Total 256 PT values are read.
FAS_PosTableRunItem	The motor starts to run from the designated position table in sequence.
FAS_PosTableReadOneItem	To read items of RAM area in the specific one item of position table.
FAS_PosTableWriteOneItem	To save specific one item of position table items to RAM area.

(This functions library is not supported for Ezi-SERVO ALL-28.)

FAS_PosTableReadItem

To read a specific item in the position table.

Syntax

```
int FAS_PosTableReadItem(
    BYTE nPortNo,
    BYTE iSlaveNo,
    WORD wItemNo,
    LPITEM_NODE lpItem
);
```

Parameters

nPortNo
Port number of relevant drive.

iSlaveNo
Slave number of relevant drive.

wItemNo
Item number to be read

lpItem
Item structure pointer which item value is saved

Return Value

FMM_OK : Command has been normally performed.

FMM_NOT_OPEN : The drive has not been connected yet.

FMM_INVALID_PORT_NUM : There is no nPort in the connected ports.

FMM_INVALID_SLAVE_NUM : There is no drive of iSlaveNo in the relevant port.

FMM_INVALID_PARAMETER_NUM : wItemNo is out of range.

Remarks

Example

```
#include "FAS_EziMOTIONPlusR.h"

void funcPosTable()
{
    BYTE nPortNo = 1; // COMM Port Number
    BYTE iSlaveNo = 0; // Slave No (0 ~ 15)
    WORD wItemNo;
    ITEM_NODE nodeItem;
    int nRtn;

    // Try to connect
    if (FAS_Connect(nPortNo, 115200) == FALSE)
```

```

{
    // Connection failed.
    // The port is not connected or the baudrate may be wrong.
    return;
}

// Read No.20 Position table value and edit the position value.
wItemNo = 20;
nRtn = FAS_PosTableReadItem(nPortNo, iSlaveNo, wItemNo, &nodelItem);
_ASSERT(nRtn == FMM_OK);

nodelItem.lPosition = 260000; // Change the position value to 260000.
nodelItem.wBranch = 23;      // Set next command to 23.
nodelItem.wContinuous = 1;   // Next command should be connected without deceleration.

nRtn = FAS_PosTableWriteItem(nPortNo, iSlaveNo, wItemNo, &nodelItem);
_ASSERT(nRtn == FMM_OK);

// Call the value in the ROM regardless of edited position table data.
nRtn = FAS_PosTableReadROM(nPortNo, iSlaveNo);
_ASSERT(nRtn == FMM_OK);

// Save edited position table data in the ROM.
nRtn = FAS_PosTableWriteROM(nPortNo, iSlaveNo);
_ASSERT(nRtn == FMM_OK);

// Disconnect.
FAS_Close(nPortNo);
}

```

See Also

FAS_PosTableWriteItem

FAS_PosTableWriteItem

To edit specific items in the position table.

Syntax

```
int FAS_PosTableWriteItem(
    BYTE nPortNo,
    BYTE iSlaveNo,
    WORD wItemNo,
    LPITEM_NODE lpItem
);
```

Parameters

nPortNo
Port number of relevant drive.

iSlaveNo
Slave number of relevant drive.

wItemNo
Item number to be edited

lpItem
Item structure pointer to be edited

Return Value

FMM_OK : Command has been normally performed.

FMM_NOT_OPEN : The drive has not been connected yet.

FMM_INVALID_PORT_NUM : There is no nPort in the connected ports.

FMM_INVALID_SLAVE_NUM : There is no drive of iSlaveNo in the relevant port.

FMC_POSTABLE_ERROR : An error occurs while position table is being written.

FMM_INVALID_PARAMETER_NUM : wItemNo is out of range.

Remarks

Position Table data is saved to RAM / ROM area. This function acts to save data to RAM area. When power is off, data is deleted.

Example

See Also

FAS_PosTableReadItem

FAS_PosTableWriteROM

To save all current position table items to ROM area.

Syntax

```
int FAS_PosTableWriteROM(  
    BYTE nPortNo,  
    BYTE iSlaveNo  
);
```

Parameters

nPortNo
Port number of relevant drive.

iSlaveNo
Slave number of relevant drive.

Return Value

FMM_OK : Command has been normally performed.

FMM_NOT_OPEN : The drive has not been connected yet.

FMM_INVALID_PORT_NUM : There is no nPort in the connected ports.

FMM_INVALID_SLAVE_NUM : There is no drive of iSlaveNo in the relevant port.

FMC_POSTABLE_ERROR : An error occurs while position table is being saved.

Remarks

Position table data is saved to RAM / ROM area. This function acts to save data to ROM area. Even though power is off, data is preserved.

Example

See Also

FAS_PosTableReadROM

FAS_PosTableReadROM

To read position table items being saved in ROM area.

Syntax

```
int FAS_PosTableReadROM(  
    BYTE nPortNo,  
    BYTE iSlaveNo  
);
```

Parameters

nPortNo
Port number of relevant drive.

iSlaveNo
Slave number of relevant drive.

Return Value

FMM_OK : Command has been normally performed.

FMM_NOT_OPEN : The drive has not been connected yet.

FMM_INVALID_PORT_NUM : There is no nPort in the connected ports.

FMM_INVALID_SLAVE_NUM : There is no drive of iSlaveNo in the relevant port.

FMC_POSTABLE_ERROR : An error occurs while position table is being read.

Remarks

Example

See Also

FAS_PosTableWriteROM

FAS_PosTableRunItem

To perform command from a specific item in the position table.

Syntax

```
int FAS_PosTableRunItem(  
    BYTE nPortNo,  
    BYTE iSlaveNo,  
    WORD wItemNo  
);
```

Parameters

nPortNo
Port number of relevant drive.

iSlaveNo
Slave number of relevant drive.

wItemNo
Item number to start motion

Return Value

FMM_OK : Command has been normally performed.

FMM_NOT_OPEN : The drive has not been connected yet.

FMM_INVALID_PORT_NUM : There is no nPort in the connected ports.

FMM_INVALID_SLAVE_NUM : There is no drive of iSlaveNo in the relevant port.

FMM_INVALID_PARAMETER_NUM : wItemNo is out of range.

Remarks

Example

See Also

FAS_GetAllStatus

FAS_MoveStop

FAS_EmergencyStop

FAS_PosTableReadOneItem

To read a one item in the specific position table.

Syntax

```
int FAS_PosTableReadOneItem(  
    BYTE nPortNo,  
    BYTE iSlaveNo,  
    WORD wItemNo,  
    WORD wOffset,  
    long* lPosItemVal  
);
```

Parameters

nPortNo

Port number of relevant drive.

iSlaveNo

Slave number of relevant drive.

wItemNo

Item number to be read

wOffset

offset value which will be read in PT items. (Refer to '[1-2-6. Position Table Item](#)'))

Return Value

FMM_OK : Command has been normally performed.

FMM_NOT_OPEN : The drive has not been connected yet.

FMM_INVALID_PORT_NUM : There is no nPort in the connected ports.

FMM_INVALID_SLAVE_NUM : There is no drive of iSlaveNo in the relevant port.

FMM_INVALID_PARAMETER_NUM : wItemNo is out of range.

Remarks

Example

See Also

FAS_PosTableWriteOneItem

FAS_PosTableWriteOneItem

To edit one item in the specific position table.

Syntax

```
int FAS_PosTableWriteOneItem(  
    BYTE nPortNo,  
    BYTE iSlaveNo,  
    WORD wItemNo,  
    WORD wOffset,  
    long lPosItemVal  
);
```

Parameters

nPortNo

Port number of relevant drive.

iSlaveNo

Slave number of relevant drive.

wItemNo

Item number to be edited

wOffset

offset value which will be save in PT items. (Refer to '[2-2-6. Position Table Item](#)'))

Return Value

FMM_OK : Command has been normally performed.

FMM_NOT_OPEN : The drive has not been connected yet.

FMM_INVALID_PORT_NUM : There is no nPort in the connected ports.

FMM_INVALID_SLAVE_NUM : There is no drive of iSlaveNo in the relevant port.

FMC_POSTABLE_ERROR : An error occurs while position table is being written.

FMM_INVALID_PARAMETER_NUM : wItemNo is out of range.

Remarks

Example

See Also

FAS_PosTableReadOneItem

3.11 Other Control Function

Function Name	Description
FAS_TriggerOutput_RunA	To make output signal in fixed(setting) position.
FAS_TriggerOutput_Status	To show current status of output signal function.
FAS_MovePush	To make push motion(with fixed torque) in fixed position.
FAS_GetPushStatus	To show current status of push motion function

(This functions library is not supported for Ezi-SERVO ALL-28.)

FAS_TriggerOutput_RunA

During position motioning process, output signal(COMP pin) is makepulse(ON/OFF) in fixed position.

Syntax

```
int FAS_TriggerOutput_RunA(
    BYTE nPortNo,
    BYTE iSlaveNo,
    BOOL bStartTrigger,
    long lStartPos,
    DWORD dwPeriod,
    DWORD dwPulseTime,
);
```

Parameters

nPortNo
Port number of relevant drive.

iSlaveNo
Slave number of relevant drive.

bStartTrigger
oupput signal start/stop command (1:start, 0:stop)

long lStartPos
position of output signal ON [pulse]

DWORD dwPeriod
Output signal period [pulse]

DWORD dwPulseTime
Output signal pulse width [msec]

Return Value

FMM_OK : Command has been normally performed.

FMM_NOT_OPEN : The drive has not been connected yet.

FMM_INVALID_PORT_NUM : There is no nPort in the connected ports.

FMM_INVALID_SLAVE_NUM : There is no drive of iSlaveNo in the relevant port.

Remarks

Example

See Also

FAS_TriggerOutput_Status

FAS_TriggerOutput_Status

To check output signal function is working or not.

Syntax

```
int FAS_TriggerOutput_Status(  
    BYTE nPortNo,  
    BYTE iSlaveNo,  
    BYTE* bTriggerStatus  
);
```

Parameters

nPortNo
Port number of relevant drive.

iSlaveNo
Slave number of relevant drive.

bTriggerStatus
current output signal status.

Return Value

FMM_OK : Command has been normally performed.

FMM_NOT_OPEN : The drive has not been connected yet.

FMM_INVALID_PORT_NUM : There is no nPort in the connected ports.

FMM_INVALID_SLAVE_NUM : There is no drive of iSlaveNo in the relevant port

Remarks

Example

See Also

FAS_TriggerOutput_RunA

FAS_MovePush

In fixed position, the push motion is start in the middle of position motioning. In push motioning, the torque is maintained during motioning. And after the work is detected, the torque is maintained also.

Syntax

```
int FAS_MovePush(
    BYTE nPortNo,
    BYTE iSlaveNo,
    DWORD dwStartSpd,
    DWORD dwMoveSpd,
    long IPosition,
    WORD wAccel, WORD wDecel,
    WORD wPushRate,
    DWORD dwPushSpd,
    long IEndPosition,
    WORD wPushMode
);
```

Parameters

nPortNo
Port number of relevant drive.

iSlaveNo
Slave number of relevant drive.

DWORD dwStartSpd
start speed of position command.

DWORD dwMoveSpd
motion speed of position command

long IPosition
absolute position value of position command.

WORD wAccel
Acceleration time of position command

WORD wDecel
Deceleration time of position command

WORD wPushRate
Torque ratio of Push motioning

DWORD dwPushSpd
Motion speed of Push motioning

long IEndPosition
absolute position value of Push motioning

WORD wPushMode
Mode selection of Push motion

Return Value

FMM_OK : Command has been normally performed.

FMM_NOT_OPEN : The drive has not been connected yet.

FMM_INVALID_PORT_NUM : There is no nPort in the connected ports.

FMM_INVALID_SLAVE_NUM : There is no drive of iSlaveNo in the relevant port.

Remarks

Example

See Also

FAS_GetPushStatus

FAS_GetPushStatus

To monitoring the status of push motioning.

Syntax

```
int FAS_MovePush(  
    BYTE nPortNo,  
    BYTE iSlaveNo,  
    BYTE* nPushStatus  
);
```

Parameters

nPortNo

Port number of relevant drive.

iSlaveNo

Slave number of relevant drive.

BYTE nPushStatus*

Value of push motion status. (refer to ['2.2.1 Frame Type and Data configuration'](#))

Return Value

FMM_OK : Command has been normally performed.

FMM_NOT_OPEN : The drive has not been connected yet.

FMM_INVALID_PORT_NUM : There is no nPort in the connected ports.

FMM_INVALID_SLAVE_NUM : There is no drive of iSlaveNo in the relevant port.

Remarks

Example

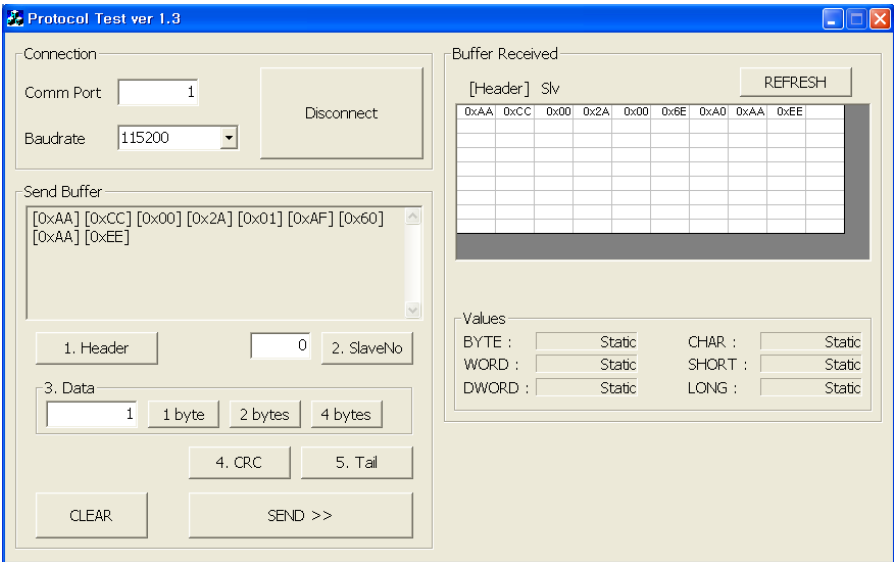
See Also

FAS_Move Push

4. Protocol for PLC Program

Next window is open when you click “ProtocolTest_PlusR” in User Program(GUI) installed folder.
Next test procedure will help you to understand the protocol programming.

4.1 Servo ON/OFF command protocol



The header and tail information is needed for protocol programming. Additionally Frame Data (Slave ID, Frame type, Data and CRC) is also needed in every protocol with header and tail.

- 1) Insert 'Comm Port' number and click 'Connect' button.
- 2) Header : Click 'Header' and you can see '[0XAA][0xCC]' on 'Send Buffer' window.
- 3) Slave ID : Insert your slave number(above example is '0') and click 'SlaveNo'.
- 4) Frame type : Insert 'Frame type'.

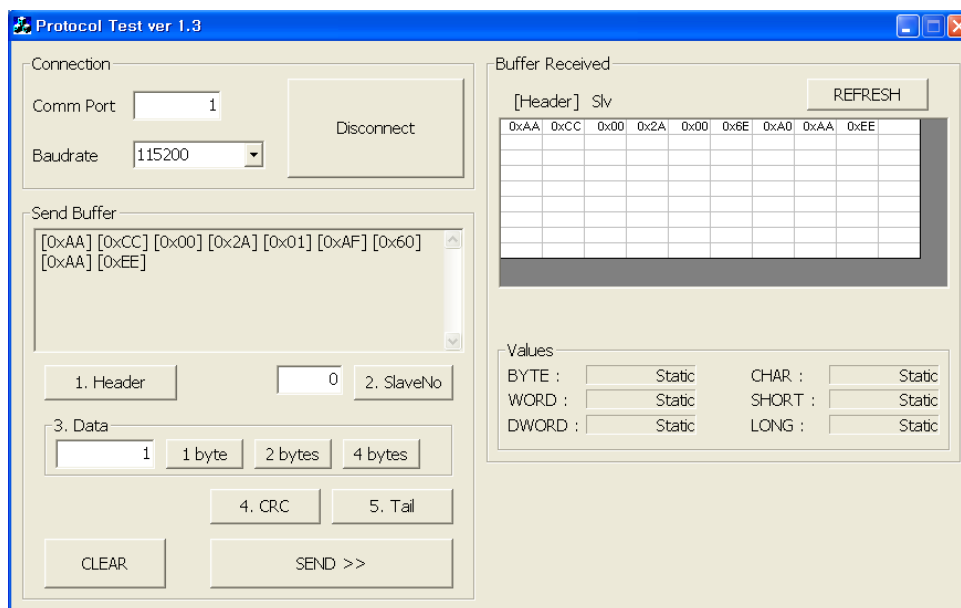
You can find next table information in '2-2-1. Frame Type and Data Configuration' on UserManual_Communication Function.

Frame type	DLL Library name	Data
42 (0x2A)	FAS_ServoEnable	<div>Setting the Servo ON/OFF status.</div> <div>Sending : 1 byte</div> <div><div>1 byte</div><div>0:OFF, 1:ON</div></div>

Insert '42' in Data area and click '1 byte' because the size of Frame Type is 1 byte.

- 5) Data : To make Servo ON status, the data is '1'. Insert '1' in Data area and click 1 byte.
 - 6) CRC : Click 'CRC' and the calculated result value(2 bytes) is displayed on 'Send Buffer' window.
 - 7) Tail : click 'Tail' and you can see '[0xAA][0xEE]' on 'Send Buffer' window.
 - 8) Finally click 'Send' button to send command characters to Ezi-SERVO Plus-R.
- You can check the motor torque and LED flash for Servo ON status.
- 9) After sending command you can check the answering information from Ezi-SERVO Plus-R on 'Buffer Received' window.

4.2 Motion command protocol



- 1) Header
- 2) Slave No.
- 3) Frame type : insert '53' in 1 byte size for 'Incremental Move' command.
- 4) Data(Position value) : insert '10000' and click '4 byte'.
- 5) Data(Running speed) : insert '5000' and click '4 byte'.
- 6) CRC
- 7) Tail
- 8) Send : After sending command you can check the motor rotation and if click 'Send' more the motor will rotate one more time.



Fast, Accurate, Smooth Motion

FASTECH Co., Ltd.

Rm#1202, 401-dong, Bucheon Techno-Park,
655, Pyeongcheon-ro, Bucheon-si Gyeonggi-do,
Republic of Korea (Zip:14502)
TEL : +82-32-234-6300 FAX : +82-32-234-6302
E-mail : fastech@fastech.co.kr
Homepage : www.fastech.co.kr

- Please note that the specifications are subject to change without notice due to product improvements.
- Ezi-SERVO is the registered trademark of FASTECH Co., LTD.
- Copyright 2016 FASTECH Co., Ltd. All Rights Reserved. Jan 22 2021 Ver.4